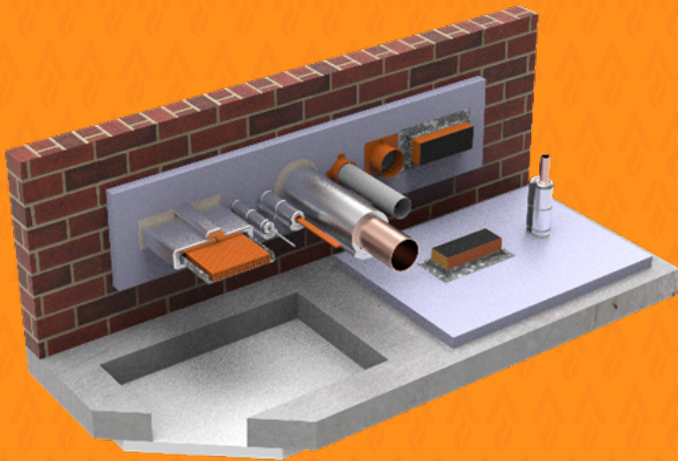
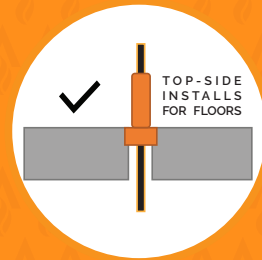


FyreBOARD MAXILITE

Penetration Systems



Maxilite is a lightweight high-performance fire rated board which is highly adaptable to provide tested solutions in challenging scenarios. Stable under high temperatures whilst being crack free provides confidence when applying 60mm Maxilite for sealing penetration systems in walls, floor and ceilings.



KEY FEATURES

- Lightweight
- FRL up to 4 hours
- Tested to AS1530.4-2014
- High resistance to heat
- Retrofit application
- Fully tested and approved with Trafalgar penetration products
- Environmentally friendly
- Various methods of installation
- Easy to cut and handle

APPLICATIONS

Electricians	Power Data cables Conduits Cable tray
Plumbers	Steel and Copper pipes PVC pipes PEX pipes PEX-AL-PEX pipes
HVAC&R	Insulated Pipes Fire Damper Upgrades
Active Fire	Sprinkler Pipes Fire Cables

TRADES



Table of Contents

Click
page title to go to
Page



	Page	
Overview	1	
What is Maxilite and its Applications	3	
Product Specifications	4	
FRL Tables	FRL Details	5
	Maxilite Penetration checklist	6
	Maxilite Blank Penetrations- Walls	7
	Maxilite Blank Penetrations- Ceilings and Floors	8
Service Penetrations	9	
Ceiling Penetrations	10	
FyreBOX Penetrations	11-12	
FRL Tables	Electrical, Data and Communications Cables- Wall Penetrations	13
	Electrical, Data and Communications Cables- Floor Penetrations	14
	Electrical, Data and Communications Cables- Ceiling Penetrations	15-16
	Metal Pipes- Wall Penetrations	17
	Metal Pipes- Floor Penetrations	18
	Metal Pipes-Ceiling Penetrations	19
	PEX Pipes-Wall Penetrations	20
	PEX Pipes- Floors Penetrations	21
	PEX Pipes- Ceiling Penetrations	22
	PVC Conduits- Walls Penetrations	23
	PVC Conduits- Floor Penetrations	24
	PVC Conduits- Ceiling Penetrations	25
	Plastic Pipes- Wall and Floor Penetrations	26
	Plastic Pipes- Ceiling Penetrations	27
	HVAC&R- Walls Penetrations	28
	HVAC&R- Floor Penetrations	29
	HVAC&R- Ceiling Penetrations	30
Steel Threaded Rod- Floor Penetrations	31	
Installation- Maxilite for penetrations	32-33	
System Range- Related Products	34-39	
FAQs	40	
Technical Drawings	41-52	

FyreBOARD MAXILITE

Fire Rated Board

What is MAXILITE

Maxilite is a lightweight, high performance fire rated board. It is calcium-silicate based product, bonded together with non-organic binders, no asbestos, and low volatile organic compounds (VOC's). It is a versatile product, providing numerous potential solutions in even the most difficult situations.

Maxilite boards are able to withstand high temperatures while remaining stable and crack free, making it an ideal product for fire protection. Particularly suited to closing-down oversize penetrations, Maxilite has been tested to current AS1530.4 – 2014 with many of our products, presenting various solutions to the industry.

Whilst this technical manual will focus on penetrations, Maxilite can also be used other applications including steel protection and bulkheads.

- [FyreBoard Maxilite Structural Steel Fire Proofing Systems Technical Manual](#)
- [FyreBOARD Maxilite Bulkheads Technical Manual](#)
- [Damper Upgrades Technical Manual](#)



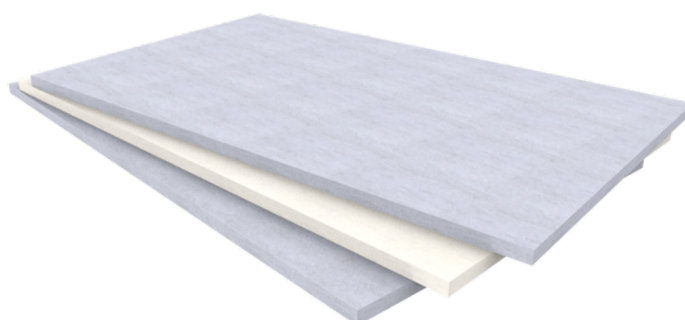
Applications

Maxilite systems are suitable for penetrations in a building through various fire rated substrates including plasterboard and Hebel walls, concrete/masonry walls and floors and plasterboard ceilings. Maxilite has been tested and approved with the use of Trafalgar products for certain services which will be detailed in this technical guide.

PRODUCT SPECIFICATIONS



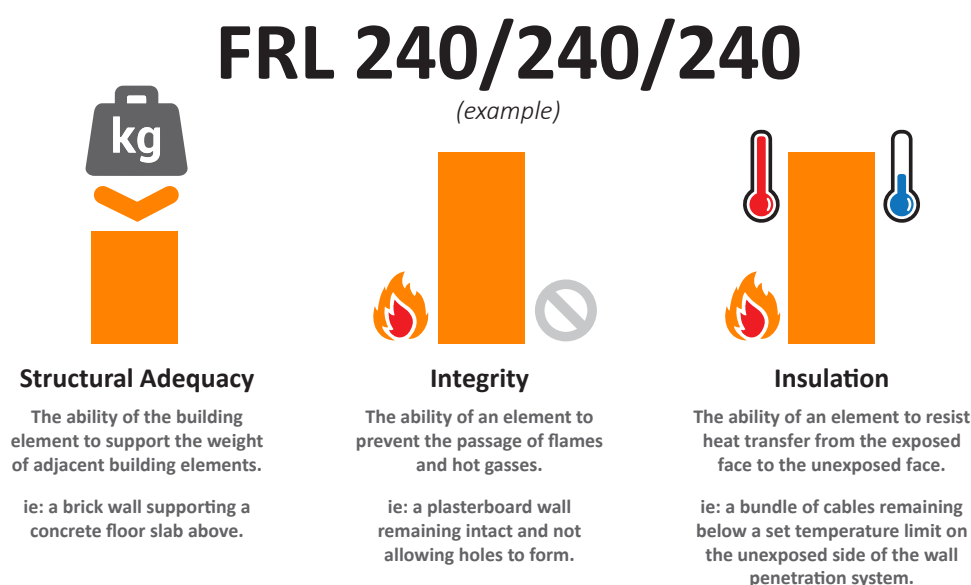
Spec	Detail		
Thickness	30, 40 & 60mm		
Sheet size (half sheets available)	1520x1000mm (white) 2020x1220mm (blue)		
Density (avg, dry)	330Kg/m ²		
Board weight	30mm	1520x1000: 16Kg	2040x1220: 23Kg
	40mm	1520x1000: 22Kg	2040x1220: 30Kg
	60mm	1520x1000: 32Kg	2040x1220: 45Kg
Material	Calcium Silicate with non-organic binders		
Combustible	Non-combustible to AS1530.1		
Maximum service temp	1000 deg C		
Permeability to gasses	1.0 nPm		
Specific heat	0.84 KJ/(KgK)		
Thermal conductivity	0.09 W/(mK) at 200 deg C		
R-value	0.7 m ² K/W		
Acoustic ratings	30mm: Rw30 (Rw+Ctr 28)		
	40mm: Rw31 (Rw+Ctr 28)		
	60mm: Rw33 (Rw+Ctr 30)		
Flexural strength	1.27MPa		
Test for asbestos content	0%		
Storage	Store in a cool, dry environment		
Handling	Transport on pallets to avoid breakage		



FRL DETAILS

Fire Rating – How is fire performance measured?

An FRL (fire resistance level) is a handy way of summarising the performance of a building element. It consists of 3 numbers, all given in minutes:



Integrity

The Maxilite system can achieve the integrity performance for up to 4 hours physically stopping the direct spread of fire, however the insulation performance of the penetration will be limited to the type of wall, floor or ceiling being used, and thermal conductivity of the services in the penetration.

Insulation (Temperature Rise)

Heat transfer via conduction (or heat rise) will occur through the conductive parts of any penetration system. Maxilite boards are able to withstand high temperatures and achieve 4-hour insulation in the case of blank penetrations which is limited to the FRL of the substrate. Where services penetrate Maxilite board, often TWrap is needed to insulate the conductive materials (cables, metal pipes etc) as shown the FRL tables below.

MAXILITE PENETRATION CHECKLIST

1. Am I fixing into an approved barrier type, and is the size of my blank opening covered by a report?

Check pages 7 and 8 for the approved barriers and their respective approved opening sizes



2. Are there enough edges for me to overlap with Maxilite?

You need at least 3 sides to overlap the opening in the barrier. The 4th side can be hard against a fire rated barrier.



The side hard against the wall is required to have a 75x75x0.9 steel angle in lengths of 1200mm. Leave 10-20mm gaps between angles for expansion.

3. Am I installing a FyreBOX?

FyreBoxes have slightly different installation requirements compared to other Trafalgar systems.

FyreBoxes **must be at least 100mm apart**, and there needs to be enough Maxilite board to support the weight of the installed FyreBox.

See pages 10 and 11 for the dimensions around the penetration necessary to support the FyreBox

4. Where am I allowed to penetrate the board?

Penetrations for services must be at least 50mm apart.

Penetrations must fall within the Penetration Zone shown on page 49



5. What fixings do I need to use to install the board into the barrier?

Check pages 7 and 8 for the approved fixings for each barrier type



6. Are my services approved in this board configuration (wall, floor, ceiling, bulkhead)?

See the FRL tables on the following pages of this technical manual and refer to FCO2586 Table 19 and 20.



Maxilite Blank Penetrations

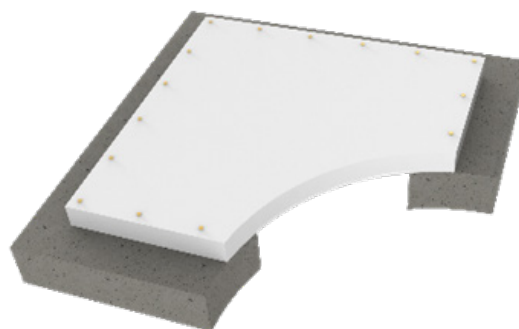
Blank Seals in Walls (no services)



Approved walls	Fixing specification	Max Aperture Size	Install Type
Plasterboard stud walls (single and double layer)	10g plaster screws into studs at max 200mm centers	1.8m² (or max size supported by the wall manufacturer's approvals with aperture framed if needed)	60mm -/120/120
Plasterboard shaft walls (CH-stud type only)			Test report: FCO2586
AAC 75mm walls (Hebel/Walsc)			60mm -/90/90
			Test report: FCO2586
Masonry / Concrete walls	M6 Masonry anchors at max 200mm centers	1.8m² (aperture designed as per AS3600/3700 design using lintels where required)	60mm -/180/180
			Test report: FCO2586

Maxilite Blank Penetrations

Blank seals in Floors & Ceilings (no services)



Approved walls	Fixing specification	Max Aperture Size	FRL & Maxilite Thickness
Concrete floors	M6 Masonry anchors at max 200mm centres	1.8m ² (aperture designed as per AS3600 design)	40mm -/120/120 Test report: FCO2586 60mm -/240/240 Test report: FCO2586
Plasterboard Ceilings – 2x layer	10gx100mm plasterboard screws at 200mm centers (with additional ceiling framing)	500x200mm	60mm -/60/60 with 60 mins RISF Test report: RTL FT1552.01
Plasterboard Ceilings – 3x layer	10gx100mm plasterboard screws at 200mm centers (with additional ceiling framing)	500x200mm	60mm -/120/120 with 60 mins RISF Test report: RTL FT1553.01

Refer to the drawings at the end of the manual for installation specifications, as well as the installation section.

SERVICE PENETRATIONS



Maxilite systems are suitable for penetrations in a building through various fire rated substrates including plasterboard and Hebel walls, concrete/masonry walls and floors and plasterboard ceilings. Maxilite has been tested and approved for the following services and products. Note that Maxilite will ‘close down’ the larger penetration, and each separate service type will need to be sealed appropriately with the following ‘local’ penetration systems:

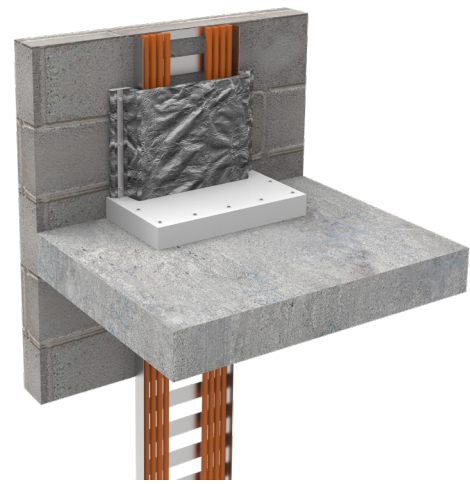
Services	Trafalgar fire stopping systems in Maxilite board
Electrical, Data and Communications Cables	FyreFLEX sealant & TWrap FyreBOX range – Maxi & mini & TWrap
Steel and Copper Pipes	FyreFLEX sealant & TWrap FyreBOX range – Maxi & mini & TWrap
Insulated Copper Pipes	FyrePEX HP Sealant & TWrap FyreCOLLAR range & TWrap FyreBOX range – Maxi & mini & TWrap
PVC Pipe and Conduits	FyrePEX HP FyreCOLLAR range FyreBOX range – Maxi & mini & TWrap
PEX & PEX-al-PEX	FyrePEX HP & FyreSHEATH FyreBOX range – Maxi & mini & TWrap
Steel Threaded Rod	FyreFLEX & TWrap
Intumescent Dampers	Upgrade existing damper installations in oversized penetrations – refer to our Damper Upgrades technical manual.



Service Separation

Services can be as close as 50mm apart when using Maxilite board as per the systems in this manual shown on the following pages.

Note that cable trays can be installed hard up against the edges of a penetration system if required.

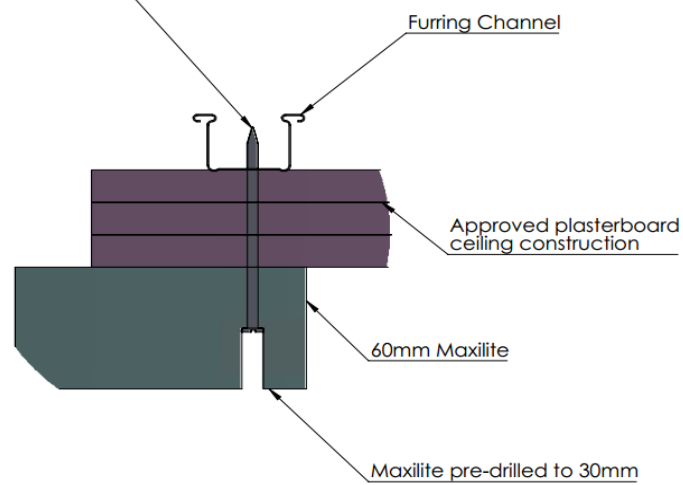


CEILING PENETRATIONS



Maxilite systems are suitable for penetrations in a building through various fire rated substrates including plasterboard ceilings. When applying the Maxilite board to the ceiling, ensure that the board extends past the furring channel and is secured into it as shown in the image below. For further installation instructions, please refer to [pages 32-33](#).

8g x 100mm screw fixed through Maxilite, plasterboard, and into furring channel which runs down each side of the penetration. 5 screws used in each end piece, and 4 in the middle piece.



FyreBOX ceiling pennetrations

Referring to FyreBOX systems for ceiling penetrations (test report: **FC10266-01-4**), the FRL tables in the proceeding section, it states suitable for 3x 16mm FR plasterboard ceilings for -/120/120 & 60 minutes RISF. It should be noted that FyreBOX systems incorporating the same details including TWrap length are also suitable for additional ceiling constructions for the following FRL & RISF values.

Ceiling construction	FRL	RISF
Minimum thickness of 16mm rated at (30)/30/30	-/30/30	30 minutes
Minimum thickness of 29mm rated at (60)/60/60	-/60/60	60 minutes
Minimum thickness of 32mm rated at (90)/90/90	-/90/90	60 minutes
Minimum thickness of 48mm rated at (120)/120/120	-/120/120	60 minutes

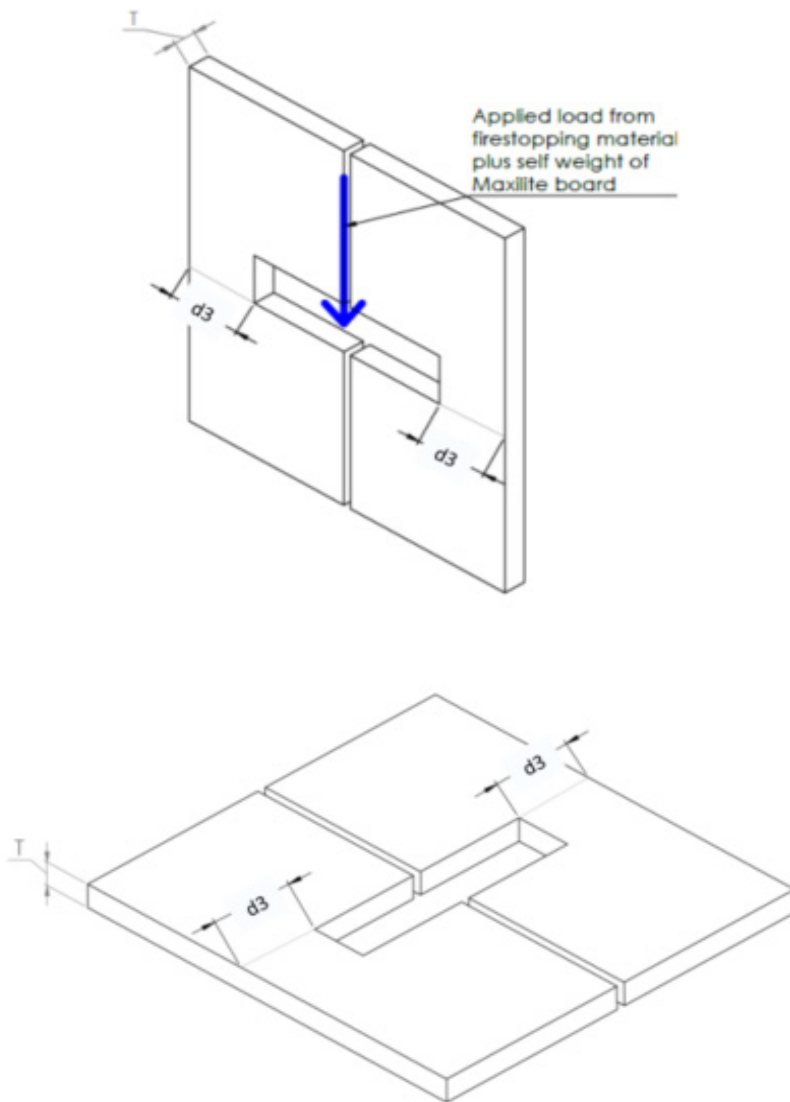


FYREBOX PENETRATIONS



When installing the FyrBOX Maxi systems with maxilite, care must be taken to ensure the correct Maxilite board length is selected to ensure the system can handle the load placed on the board. The proceeding figures and tables display the required Maxilite sizes corresponding to the size of the FyreBOX Maxi.

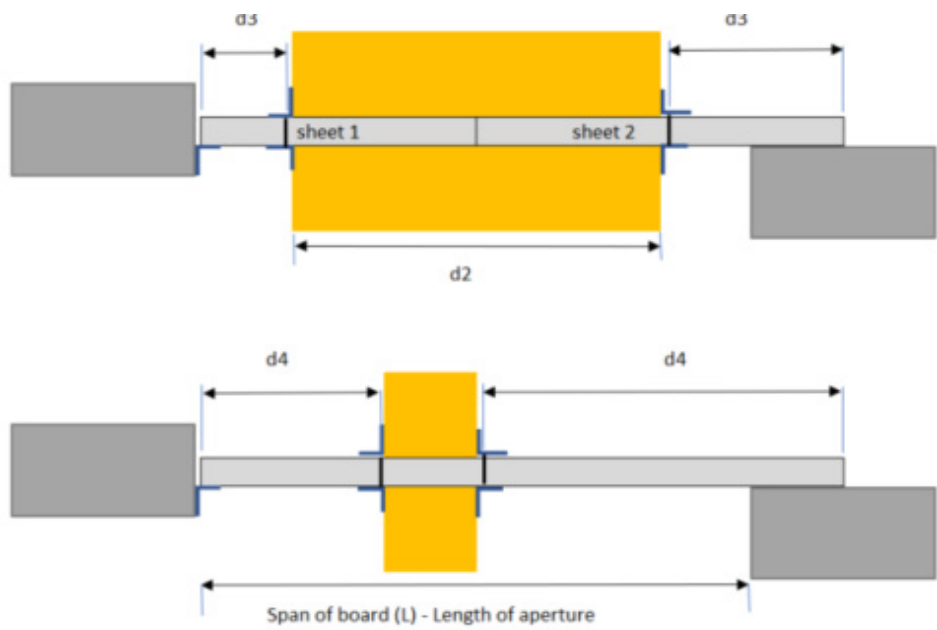
Openings in vertical board penetrations



Openings in minimum 60mm thick Maxilite board with an opening for FyreBOX. Two sheets only



FYREBOX PENETRATIONS



Item	Description
Span	Separation of support for sheet
d2	Width of the box (eg 350, 450...750) etc
d3	Sheet width between the short edge of the box and the edge of the sheet. It shall be at least 150mm for spans up to 850mm. For larger spans refer to Table
d4	Sheet width between the long edge of the box and the edge of the sheet. It shall be at least 150mm for spans up to 850mm. For larger spans refer to Table
Clearance around box	Shall be a maximum of 10mm
Even cut in each sheet	The cutout for the Fyrebox in each sheet shall be equal +/- 20mm

Openings in minimum 60mm thick Maxilite board with an opening for FyreBOX

Residual Section d3 (m) for various spans and various Fyrebox designs								
Span L (m)	1.1	1.2	1.3	1.4	1.5	1.6	1.7	1.8
Fyrebox Maxi 350	0.15	0.15	0.15	0.15	0.15	0.15	0.16	0.18
Fyrebox Maxi 550	0.15	0.15	0.15	0.17	0.19	0.21	0.23	0.26
Fyrebox Maxi 650	0.15	0.15	0.17	0.19	0.22	0.24	0.27	0.3
Fyrebox Maxi 750	0.15	0.17	0.2	0.22	0.25	0.28	0.31	0.35
Fyrebox Maxi 1100	0.21	0.24	0.27	0.31	0.34	0.39	0.43	0.49

FRLs - Electrical, data and communications cables

Wall Penetrations



Service	Specification	Fire Stopping Specification	TWrap	Max. FRL and Maxilite Thickness
Cable bundles	AS1530.4-2014 Appendix D1 copper core power cables* -TPS cables -Fire cables -Single core -3c+E cables etc	FyreFLEX Sealant and TWrap Max. 20mm annular gap Fill FyreFLEX Sealant to full depth of board (60mm) and finish with 50x50mm fillet on both sides of the wall.	300mm*	60mm -/180/120 Test report: FCO2586
Cable trays up to 300mm				
Data cables	Up to 20x CAT6 cables	FyreFLEX Sealant and TWrap Max. 5mm annular gap Fill FyreFLEX Sealant to full depth of board (60mm) and finish with 50x50mm fillet on both sides of the wall.	300mm	60mm -/120/120 Test report: FCO2586
VRF Cables	Up to 8x 7mm Eltech VRF cables, 1.5mm diameter conductors			
TPS cables	Up to 12x TPS cables	FyreBOX Mini/Maxi and TWrap Annular gaps from 5-20mm. Fill to full depth of board with FyreFLEX sealant.	300mm	60mm FRL-/120/120 Test report: FC10266-01-4
Large bundles and/or mixed services	All copper core cables (AS1530.4 appendix D1 and D2 cable sets) with cable trays up to 1000mm wide, PVC conduits, Fibre conduits, other pipe services etc.		600mm* for D1	
			450mm* for D2	
Aluminium cables	Up to 3x 240mm ² 28mm OD		300mm	
	Up to 4x 120mm ²			
Data cables	Up to 9x 70mm ² 17mm OD	300mm		
	Up to 3x RG6 cables			
	NBN Fibre optic cable			

* Loose TWRAP™/FyreWrap® infill material to be packed under the TWRAP™ for at least 300mm off the penetration

FRLs - Electrical, data and communications cables

Floor Penetrations



Service	Specification	System	TWrap	Max. FRL and Maxilite thick-ness
Cable bundles and Cable trays up to 300mm	AS1530.4-2014 Appendix D1 copper core power cables* -TPS cables -Fire cables -Single core -3C+E cables etc	FyreFLEX Sealant and TWrap Max annular gap 30mm. Fill FyreFLEX Sealant to full depth of board and finish with 50x50mm fillet on the top side only.	450mm	60mm -/240/120 Test report: FCO2586
			600mm	60mm + 30mm patch -/240/240 Test report: FAS200048
Data	Up to 24 bundles Telecom cables, maximum 15mm diameter with PVC sheathing and insulation	FyreFLEX Sealant and TWrap Max annular gap 5mm. Fill FyreFLEX Sealant to full depth of board and finish with 50x50mm fillet on the top side only.	600mm	60mm -/120/120 Test report: FCO2586
CAT6 cables	Up to 20x CAT6 cables		300mm	
TPS cables	Up to 20x Firesense-TPS 1.5mm ²			
VRF Cables	Up to 8x 7mm Eltech VRF cables, 1.5mm diameter conductors			
Large bundles and/or mixed services	All copper core cables (AS1530.4 appendix D1 and D2 cable sets) with cable trays up to 1000mm wide, PVC conduits, Fiber conduits, other pipe services etc.	FyreBOX Mini/Maxi and TWrap Annular gaps from 5-20mm. Fill to full depth of board with FyreFLEX sealant.	600mm	60mm -/120/120 Test report: FC10266-01-4
			300mm	
TPS cables	Up to 12x TPS cables			
3C + E power cables	Up to 2x 19mm 3C + E cables			

* Loose TWRAP™/FyreWrap® infill material to be packed under the TWRAP™ for at least 300mm off the penetration.

Note that TWrap is required on the top side of the penetration only.

FRLs - Electrical, data and communications cables

Ceiling Penetrations



Service	Specification	Ceiling construction	System	TWrap	Max. FRL, RISF and Maxilite thickness
Cable trays upto 300mm	20x CAT6 and/or 10x TPS and/or 7x 3C&E Cable (19mm OD)	2 layer 13mm & 16mm FR Plasterboard	FyreFLEX Sealant and TWrap Cable tray: Max 25mm annular gap Cable bundle: Max 5mm annular gap Fill FyreFLEX Sealant to full depth of board and finish with 30x30mm fillet on bottom and top side of the Maxilite.	300mm	60mm -/60/60 60 minute RISF Test report: RTL FT1552.01
Telecommunications Cable Bundles	3x CAT6 & 2 x TPS	2 layer 13mm & 16mm FR Plasterboard	FyreFLEX Sealant Cut a 32mm hole in the Maxilite. Fill FyreFLEX Sealant to full depth of board. No fillet needed	Wrap Free	60mm -/60/60 45 minute RISF Test report: RTL F47.01
	8 x CAT6 & 5 x TPS	3 layer 16mm FR Plasterboard	FyreFLEX Sealant and TWrap Cut a 54mm hole in the Maxilite. Fill FyreFLEX Sealant to full depth of board and finish with 30x30mm fillet on bottom side of the Maxilite.	300mm	60mm -/120/120 60 minute RISF Test report: RTL FT1553.01
	Up to 150 x CAT6 data	3 layer 16mm FR Plasterboard	FyreFLEX Sealant and TWrap Annular gaps from 5-20mm. Fill to full depth of board with FyreFLEX sealant.	300mm	60mm -/120/120 60 minute RISF Test report: FC10266-01-4
Large bundles and/or mixed services	All copper core cables (AS1530.4 appendix D1 and D2 cable sets) with cable trays up to 1000mm wide, PVC conduits, Fibre conduits, other pipe services etc.	3 layer 16mm FR Plasterboard	FyreBOX Mini/Maxi and TWrap Annular gaps from 5-20mm. Fill to full depth of board with FyreFLEX sealant.	300mm	60mm -/120/120 60 minute RISF Test report: FC10266-01-4

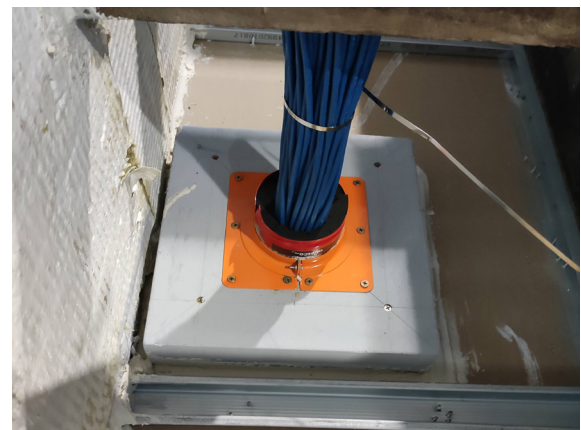
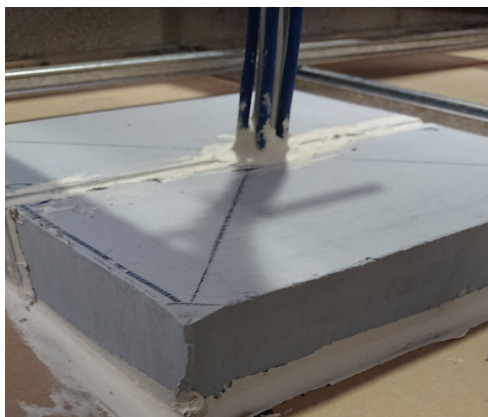
Click here to go back to Contents

FRLs - Electrical, data and communications cables

Ceiling Penetrations



Service	Specification	Ceiling construction	System	TWrap	Max. FRL, RISF and Maxilite thick-ness
Aluminium cables	Up to 4 x 240mm ² single core + optional 120mm ² earth cable	3 layer 16mm FR Plasterboard	FyreBOX Mini/Maxi and TWrap Annular gaps from 5-20mm. Fill to full depth of board with FyreFLEX sealant.	300mm	60mm -/120/120 60 minute RISF Test report: FC10266-01-4
	Up to 4 x 16mm ² 4C + E				
NBN Fibre optic cable					



FRLs - Metal Pipes

Walls Penetrations



Service	Size (up to)	System	TWrap	Max. FRL and Maxilite Thickness
Copper pipe	DN50	FyreFLEX Sealant and TWrap The annular gaps between the pipe and Maxilite is 5-20mm.	300mm	60mm -/90/90 Test report: FCO2586
			450mm	60mm -/180/120 Test report: FCO2586
	DN100	Fill FyreFLEX Sealant to full depth of board (60mm) and finish with 50x50mm fillet on both sides of the wall.	600mm	60mm + 30mm patch -/180/120 Test report: FCO2586
	DN150		1100mm + 300mm	
Steel Pipe	NB100		450mm	60mm -/180/120 Test report: FCO2586
	NB150		600mm	60mm + 30mm patch -/180/120 Test report: FCO2586
Copper pipe	DN32	FyreBOX Mini/Maxi and TWrap Annular gaps from 5-20mm. Fill to full depth of board with FyreFLEX sealant.	300mm	60mm -/120/120 Test report: FC10266-01-4
	DN50			
Steel Pipe	NB60			

FRLs - Metal Pipes

Floor Penetrations



Service	Size (up to)	System	TWrap	Max. FRL and Maxilite thickness
Copper Pipe	DN50	FyreFLEX Sealant and TWrap Annular gaps from 5-20mm. Fill to full depth of board with FyreFLEX sealant. Finish with 50x50mm fillet on the top side of the Maxilite only.	450mm	60mm -/90/90 Test report: FCO2586
			600mm	60mm -/120/120 Test report: FCO2586
	600mm		60mm -/90/90 Test report: FCO2586	
	800 + 300mm		60mm -/120/120 Test report: FCO2586	
	DN150		60mm + 30mm patch -/120/120 Test report: FCO2586	
Steel Pipe	NB50	60mm -/90/90 Test report: FCO2586		
	NB100	60mm -/120/120 Test report: FCO2586		
	NB150	60mm + 30mm patch -/120/120 Test report: FCO2586		

FRLs - Metal Pipes

Ceiling Penetrations



Service	Size (up to)	Ceiling construction	System	TWrap	Max. FRL, RISF and Maxilite thickness	
Copper pipe	DN50	3 layer 16mm FR Plasterboard	FyreFLEX Sealant and TWrap	450mm	60mm -/120/120 60 minute RISF Test report: RTL FT1553.01	
Steel Pipe	NB50		Maximum 5mm annular gap	300mm		
	NB100		Fill to full depth of board with FyreFLEX sealant. Finish with 30x30mm fillet on bottom of the Maxilite.	450mm		
Copper pipe	DN42		3 layer 16mm FR Plasterboard	FyreBOX Mini/Maxi and TWrap	300mm	60mm -/120/120 Test report: FC10266-01-4
	DN100				600mm	
Steel Pipe	NB50			Annular gaps from 5-20mm. Fill to full depth of board with FyreFLEX sealant.	300mm	
	NB100	600mm				

FRLs - PEX Pipes

Wall Penetrations



Service	Size (up to)	System	TWrap	Max. FRL and Maxilite thickness
PEX-a or PEX-b	20mm	FyreSHEATH & FyrePEX HP sealant 30mm opening with FyreSHEATH in-stalled to both sides of the penetration, backfilled with FyrePEX HP sealant.	Wrap Free	60mm -/120/120 Test report: FCO2586
PEX-AI-PEX	20mm			120mm -/120/120 Test report: FAR4849
				60mm -/120/30 Test report: FCO2586
Mixed PEX-a, PEX-b and PEX-AL-PEX pipes	20mm	FyreBOX Mini/Maxi and TWrap Annular gaps from 5-20mm. Fill to full depth of board with FyreFLEX sealant.	300mm	60mm -/120/120 Test report: FC10266-01-4
	20-32mm		450mm	

FRLs - PEX Pipes

Floor Penetrations



Service	Size (up to)	System	TWrap	Max. FRL and Maxilite thickness
PEX-b	16mm	FyrePEX HP 50-60mm opening, filled to full depth of Maxilite	Wrap Free	60mm -/120/60 Test report: FAR4849
PEX-AL-PEX				
PEX	25mm	FyrePEX HP and TWrap Annular gap must be 20mm Filled to full depth of Maxilite	450mm	60mm + 30mm patch -/120/120 Test report: FCO2586
PEX-AL-PEX				
Mixed PEX-a, PEX-b and PEX-AL-PEX pipes	32mm	FyreBOX Mini/Maxi and TWrap Annular gaps from 5-20mm. Fill to full depth of board with FyreFLEX sealant.	450mm	60mm -/120/120 Test report: FC10266-01-4



Click here to go back to Contents

FRLs - PEX Pipes

Ceiling Penetrations



Service	Size (up to)	System	TWrap	Max. FRL and Maxilite thickness
Mixed PEX-a, PEX-b and PEX-AL-PEX pipes	32mm	FyreBOX Mini/Maxi and TWrap Annular gaps from 5-20mm. Fill to full depth of board with FyreFLEX sealant.	300mm	60mm -/120/120 60 minutes RISF Test report: FC10266-01-4



FRLs - PVC Conduits

Wall Penetrations



Service	Size (up to)	System	TWrap	Max. FRL and Maxilite thickness
PVC conduit	Up to 25mm PVC conduit*	FyrePEX HP and TWrap 50-60mm opening and fill to full depth of board on both sides of the wall.	Wrap Free	60mm -/180/180 Test report: FAR4849
	Up to 80mm PVC conduit*	FyreCOLLAR and FyreFLEX Sealant Max annular gap 5mm, filled with FyreFLEX sealant to the full depth of board and collars fixed on both sides of the board.		60mm -/120/120 Test report: FC11190
	Up to 32mm PVC conduit and other mixed services*	FyreBOX Mini/Maxi and TWrap Annular gaps from 5-20mm. Fill to full depth of board with FyreFLEX sealant.	300mm	60mm -/120/120 Test report: FC10266

* The conduits may contain any combination of the following up to the maximum that can be accommodated; 2C & E 2.5mm² TPS cable, CAT5/CAT6 data cables, 3C & E PVC sheathed power cables up to 19 mm diameter or fiber optic cables.

FRLs - PVC Conduits

Floor Penetrations



Service	Size (up to)	System	TWrap	Max. FRL and Maxilite thickness
PVC conduit	Up to 25mm PVC conduit*	FyrePEX HP and TWrap 50-60mm opening and fill to full depth of board	Wrap Free	60mm -/240/240 Test report: FAR4849
	Up to 80mm PVC conduit*	FyreCOLLAR and FyreFLEX Sealant		60mm -/120/120 Test report: FC11190
	Up to 32mm PVC conduit and other mixed services*	FyreBOX Mini/Maxi and TWrap Annular gaps from 5-20mm. Fill to full depth of board with FyreFLEX sealant.	300mm	60mm -/120/120 Test report: FC10266-01-4

* The conduits may contain any combination of the following up to the maximum that can be accommodated; 2C & E 2.5mm² TPS cable, CAT5/CAT6 data cables, 3C & E PVC sheathed power cables up to 19 mm diameter or fiber optic cables.

FRLs - PVC Conduits

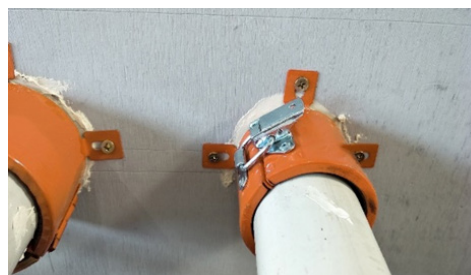
Ceiling Penetrations



Service	Size	Ceiling construction	System	TWrap	Max. FRL, RISF and Maxilite thickness
PVC conduit	25mm PVC conduit	2 layer 13mm & 16mm FR Plasterboard	FyreCOLLAR and FyreFLEX Sealant 32mm opening, filled with FyreFLEX sealant to the full depth of board and collars fixed on both sides of the board.	Wrap Free	60mm -/60/60 45 minute RISF Test report: RTL TR-47.01
	25mm PVC conduit	2 layer 13mm & 16mm FR Plasterboard	FyreCOLLAR and FyreFLEX Sealant 25mm opening, filled with FyreFLEX sealant to the full depth of board and collars fixed on both sides of the board.		60mm -/60/60 60 minute RISF Test report: RTL FT1552.01
	25mm PVC conduit	3 layer 16mm FR Plasterboard	FyreCOLLAR and FyreFLEX Sealant 32mm opening, filled with FyreFLEX sealant to the full depth of board and collars fixed on both sides of the board.		60mm -/120/120 60 minute RISF Test report: RTL FT1553.01
	32mm PVC conduit	3 layer 16mm FR Plasterboard	FyreBOX Mini/Maxi and TWrap Annular gaps from 5-20mm. Fill to full depth of board with FyreFLEX sealant.	300mm	60mm -/120/120 60 minutes RISF Test report: FC10266-01-4

FRLs - Plastic Pipes

Wall Penetrations



Service	Size (up to)	System	TWrap	Max. FRL and Maxilite thickness
PVC Pipes	80mm	FyreCOLLAR and FyreFLEX Sealant Max annular gap 5mm, filled with FyreFLEX sealant to the full depth of board and collars fixed on both sides of the board.	Wrap Free	60mm -/120/120 Test report: FC11190
	100mm			60mm + 30mm patch -/120/120 Test report: FC11190
	100mm			60mm -/120/90 Test report: FCO 2586

FRLs - Plastic Pipes

Floor Penetrations



Service	Size	System	TWrap	Max. FRL and Maxilite thickness
PVC Pipes	Up to 80mm	FyreCOLLAR and FyreFLEX Sealant Max annular gap 5mm, filled with FyreFLEX sealant to the full depth of board and collars fixed on both sides of the board.	Wrap Free	60mm -/120/120 Test report: FC11190
	100mm			60mm + 30mm patch -/120/120 Test report: FC11190
	150mm			60mm + 30mm patch -/120/120 Test report: 145797 FTR01.1
	Up to 80mm	FyreBOX Mini/Maxi and TWrap Annular gaps from 5-20mm. Fill to full depth of board with FyreFLEX sealant.	300mm	60mm -/120/120 Test report: FC10266-01-4

FRLs - Plastic Pipes

Ceiling Penetrations



Service	Size (up to)	Ceiling construction	System	TWrap	Max. FRL, RISF and Maxilite thickness
PVC Pipes	100mm	2 layer 13mm & 16mm FR Plasterboard	FyreCOLLAR and FyreFLEX Sealant	Wrap Free	60mm -/60/60 60 minute RISF Test report: RTL FT1552.01
		3 layer 16mm FR Plasterboard	111mm opening, filled with FyreFLEX sealant to the full depth of board and collars fixed on the underside of the board.		60mm -/120/120 60 minute RISF Test report: RTL FT1553.01
	80mm	3 layer 16mm FR Plasterboard	FyreBOX Mini/Maxi and TWrap	300mm	60mm -/120/120 60 minutes RISF Test report: FC10266-01-4

FRLs - HVAC&R

Wall Penetrations



Service	Size (up to)	System	TWrap	Max. FRL and Maxilite Thickness
Pair coil bundles	Single pair coil bundle* with FR insulation up to 20mm	FyrePEX HP and TWrap 110mm opening filled to full depth of Maxilite board. Apply 30x30mm fillet on both sides of the wall.	Wrap Free	60mm -/120/60 Test report: FAR 4849
	Up to 3x pair coil bundles with FR insulation up to 25mm thick, and 2x cables per pair coil (power/data)	FyreCOLLAR and FyreFLEX Sealant Max annular gap 5mm, filled with FyreFLEX sealant to the full depth of board on both sides of the wall.	300mm	60mm -/120/120 Test report: FAR 4849
				90mm -/120/120 Test report: FC11190
Pair coil, other CHW pipe and mixed services	Pair coil bundle* with FR insulation up to 20mm	FyreBOX Mini/Maxi and TWrap Annular gaps from 5-20mm. Fill to full depth of board with FyreFLEX sealant.		60mm -/120/120 Test report: FC10266-01-4
	Pair coil bundle* with PE insulation up to 13mm			
	DN50 copper with PE insulation up to 20mm thick			
	DN50 copper with FR insulation			
	DN20 copper with rockwool-type insulation up to 38mm			

*A/C bundle to consist of two insulated copper pipes (pair coil) with or without: power cables up to 12mm OD, data cables up to 6mm OD and one flexible or rigid PVC drain up to 20mm OD.

FRLs - HVAC&R

Floor Penetrations



Service	Size (up to)	System	TWrap	Max. FRL and Maxilite Thickness
Pair coil bundles	Single pair coil bundle* with FR insulation up to 20mm	FyrePEX HP and TWrap 110mm opening filled to full depth of Maxilite board. Apply 30x30mm fillet on top side of the floor.	Wrap Free	60mm -/120/60 Test report: FAR 4849
			300mm	120mm -/120/120 Test report: FAR 4849
	Up to 3x pair coil bundles with FR insulation up to 25mm thick, and 2x cables per pair coil (power/data)	FyreCOLLAR and FyreFLEX Sealant Max annular gap 5mm, filled with FyreFLEX sealant to the full depth of board on top side of the floor.	300mm	60mm + 30mm patch -/120/120 Test report: FC11190
Pair coil, other CHW pipe and mixed services	Pair coil bundle* with FR insulation up to 20mm	FyreBOX Mini/Maxi and TWrap Annular gaps from 5-20mm. Fill to full depth of board with FyreFLEX sealant.	300mm	60mm -/120/120 Test report: FC10266-01-4
	Pair coil bundle* with PE insulation up to 13mm			
	DN50 Stainless steel pipe with EPS or PE insulation and rockwool up to 20mm thick			
	DN50 copper with PE insulation up to 20mm thick			

*A/C bundle to consist of two insulated copper pipes (pair coil) with or without: power cables up to 12mm OD, data cables up to 6mm OD and one flexible or rigid PVC drain up to 20mm OD

FRLs - HVAC&R

Ceiling Penetrations



Service	Size (up to)	Ceiling construction	System	TWrap	Max. FRL and Maxilite Thickness
Pair coil bundles	Single pair coil bundle with 20mm FR insulation*	2 layer 13mm & 16mm FR Plasterboard	FyreCOLLAR and FyreFLEX Sealant 90mm opening filled to full depth of Maxilite board.	300mm	60mm (White/ blue) -/60/60 60 minute RISF Test report: RTL FT1552.01
	Single pair coil bundle*	3 layer 16mm FR Plasterboard	FyreCOLLAR and FyreFLEX Sealant 54mm opening filled to a 10mm depth of Maxilite board.	300mm	60mm (White/ blue) -/120/120 60 minute RISF Test report: RTL FT1553.01
	Pair coil bundle* with FR in-sulation up to 20mm	3 layer 16mm FR Plasterboard	FyreBOX Mini/Maxi and TWrap Annular gaps from 5-20mm. Fill to full depth of board with FyreFLEX sealant.	300mm	60mm (White/ blue) -/120/120 Test report: FC10266-01-4
	Pair coil bundle* with PE in-sulation up to 13mm				
	DN50 Stainless steel pipe with EPS or PE insulation and rockwool				
DN50 copper with FR insulation					

*A/C bundle to consist of two insulated copper pipes (pair coil) with or without: power cables up to 12mm OD, data cables up to 6mm OD and one flexible or rigid PVC drain up to 20mm OD

FRLs - Steel Threaded Rod

Floor and Wall Penetrations



Service	Barrier	Size	Fire Stopping	TWRAP	Max FRL
Steel Threaded Rod	Floor	10mm	FyreFLEX Sealant and TWRap Max annular gap 5mm. Fill FyreFLEX sealant to the full depth of board with 30 x 30mm fillet on the top side. TWRap on top side only	300mm	60mm (White/blue) -/180/180 Test Report: FRT190292
	Wall		FyreFLEX Sealant and TWRap Max annular gap 5mm. Fill FyreFLEX sealant to the full depth of board with 30 x 30mm fillet on the top side. TWRap on both sides of Maxilite		60mm (White/blue) -/120/120 Test Report: FCO 2586

INSTALLATION

Maxilite for Penetrations

Maxilite penetration systems will only be compliant if they are installed exactly how they have been tested, otherwise the FRL performance can't be confirmed. It is important that the following installation instructions are followed closely.

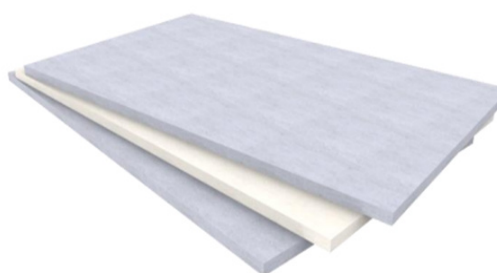
STEP 1 PREPARE THE OPENING



For plasterboard walls, the opening (or aperture) is required to be lined with stud framing and strips of plasterboard inside the opening.

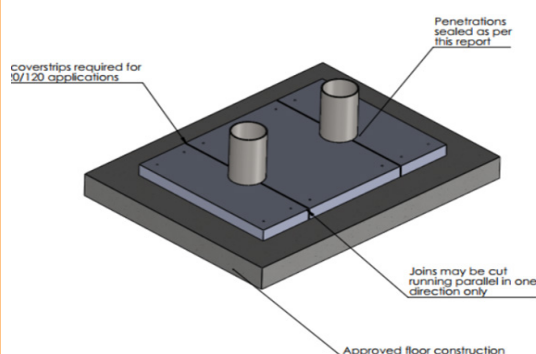
For AAC panel walls, these may require additional steel framing as per wall manufacturers recommendations.

STEP 2 - PREPARE THE BOARD



Measure the existing opening and check that it is within the approved Maxilite range. Include the required 100mm overlap onto at least 3x sides of the penetration (4th side may be installed hard against a wall). The side hard against the wall is required to have a 75x75x0.9 steel angle in lengths of 1200mm. Leave 10-20mm gaps between angles for expansion.

STEP 3 - BUTT JOINTS



Maxilite can be cut into pieces and retro-fitted around existing services. For multiple layers of Maxilite, joints in each layer should all run in the same direction (parallel).

STEP 4 - CUT THE BOARD



Using a hand saw, jig saw or reciprocating saw, cut the Maxilite board to the required size. It can be installed in various sections around existing services. Leave an annular gap around each service (refer to FRL tables above for maximum annular gaps).

Cover strips are not required for butt joints in the Maxilite board

INSTALLATION

Maxilite for Penetrations



STEP 5- FIXINGS



Fix the Maxilite to the wall or floor. These are to be installed 50mm from the edges of the Maxilite board and located at 400mm centers for concrete/masonry walls, or 200mm centers for other walls.

Refer to fixings listed on page [7-8](#).



STEP 6 SEAL



Seal any butt joints with FyreFLEX sealant, and apply FyreFLEX sealant to the perimeter of the board with a 15x15mm fillet.

Note that there is no need to seal screw heads

There is a wide range of fire stopping systems approved in Maxilite for all service types, refer to the approvals tables for details.



STEP 7 FIRE STOP SYSTEM



Install fire stopping product required for the service as listed in the FRL tables above.

(e.g. for metal pipes, seal with FyreFLEX sealant and wrap with TWrap, for plastic pipes install a FyreCOLLAR, or FyrePEX HP sealant etc.)



STEP 8 WRAP (SYSTEM SPECIFIC)



Where required, wrap the services with TWrap with a 50mm overlap, and strap in place with 4.6mm steel cable ties 50mm from each end, and 150mm centers in-between.

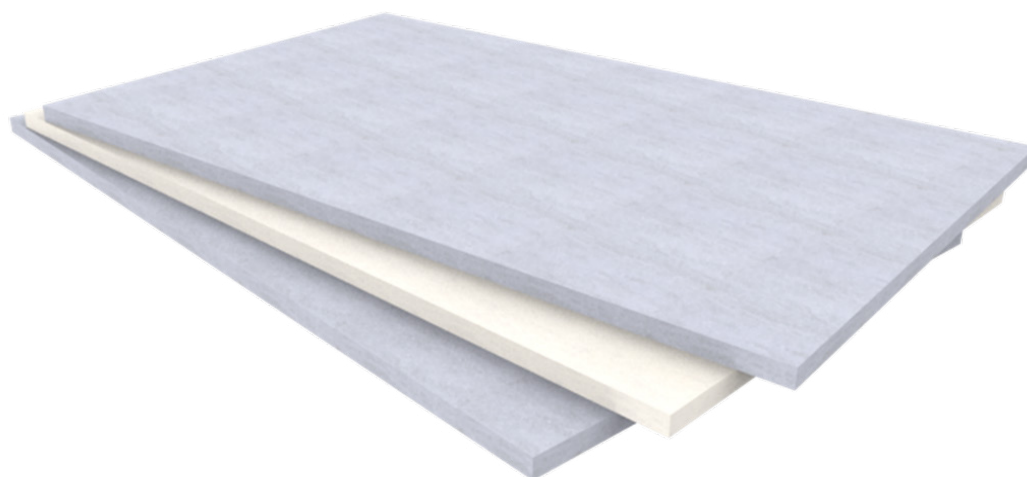
Refer to FRL tables above for the correct length of TWrap required for your service penetration.

PRODUCT RANGE

FyreBOARD MAXILITE

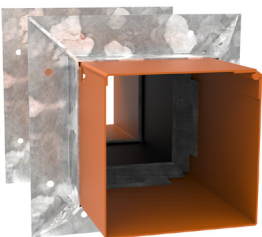
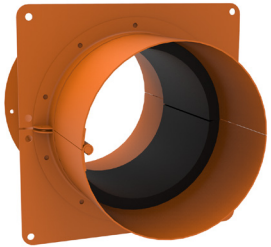


Item number	Description	Min Order Qty	Pallet Qty	Weight Per Board
Maxilite White 30	Maxilite board 1525x1000x30 mm (white)	1x	30	16kg
Maxilite White 40	Maxilite board 1525x1000x40 mm (white)	1x	22	22kg
Maxilite White 60	Maxilite board 1525x1000x60 mm (white)	1x	12	32kg
Maxilite Blue 30	Maxilite board 2040x1220x30 mm (blue)	1x	35	23kg
Maxilite Blue 40	Maxilite board 2040x1220x40 mm (blue)	1x	23	30kg
Maxilite Blue 60	Maxilite board 2040x1220x60 mm (blue)	1x	17	45kg
Maxilite Half White 30	Maxilite board 1018x1220x30 mm (white)	1x	39	11.5kg
Maxilite Half White 40	Maxilite board 1018x1220x40 mm (white)	1x	10	15kg
Maxilite Half White 60	Maxilite board 1018x1220x60 mm (white)	1x	29	22.5kg
Maxilite Half Blue 30	Maxilite board 1018x1220x30 mm (blue)	1x	61	11.5kg
Maxilite Half Blue 40	Maxilite board 1018x1220x40 mm (blue)	1x	74	15kg
Maxilite Half Blue 60	Maxilite board 1018x1220x60 mm (blue)	1x	34	22.5kg



SYSTEM RANGE RELATED SERVICES

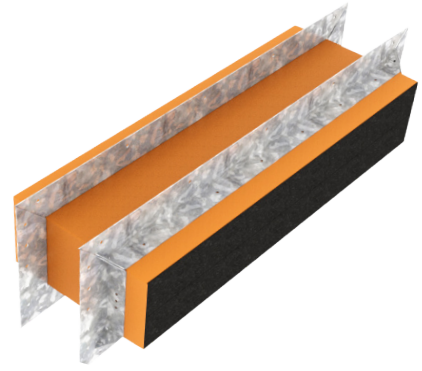
FyreBOX MINI & FyreFLANGE



Type	Item Number	Dimensions W x H x D or Diam	Dimensions
Square	FYREBOX-MS-65	65 x 65 x 250mm	
	FYREBOX-MS-100	100 x 100 x 250mm	
Round	FYREBOX-MR-50	50 x 250mm	
	FYREBOX-MR-100	100 x 250mm	
	FYREBOX-MR-150	150 x 250mm	

PRODUCT RANGE RELATED SERVICES

FyreBOX MAXI & FyreFLANGE



Item Number	Description	Dimensions
FYREBOX-MAXI-350	350 x 125 x 250mm	
FYREBOX-MAXI-550	550 x 125 x 250mm	
FYREBOX-MAXI-650	650 x 125 x 250mm	
FYREBOX-MAXI-750	750 x 125 x 250mm	
FYREBOX-MAXI-1100	1100 x 125 x 250mm	
FYREBOX-MAXI-Custom	Any depth X 125 X Any length up to 1250mm	

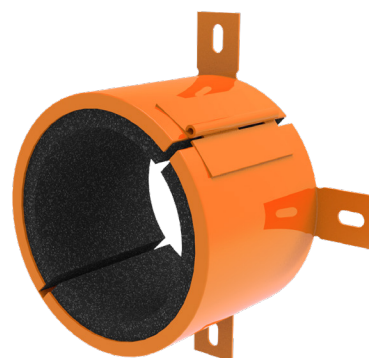
SYSTEM RANGE RELATED SERVICES

Fyre COLLAR CONDUIT



Item Number	Collar Size	To Suit Nominal Service Size	Inner Diameter	Outer Diameter	Height	Min Order Qty
FyreCOLLAR-CC-25	25mm	25mm	26mm	36mm	50mm	1
FyreCOLLAR-CC-32	32mm	32mm	33mm	44mm	50mm	1
FyreCOLLAR-CC-40	40mm	40mm	43mm	48mm	50mm	1

Fyre COLLAR PREMIUM RETROFIT



Item Number	Collar Size	To Suit Nominal Service Size	Inner Diameter	Outer Diameter	Height	Min Order Qty
FyreCOLLAR-PHRC-50	50mm	50mm	58mm	72mm	62mm	1
FyreCOLLAR-PHRC-65	65mm	65mm	72mm	90mm	62mm	1
FyreCOLLAR-PHRC-80	80mm	80mm	85mm	102mm	62mm	1
FyreCOLLAR-PHRC-100	100mm	100mm	115mm	133mm	62mm	1
FyreCOLLAR-PHRC-130	130mm	100mm Elbow/socket	130mm	155mm	62mm	1
FyreCOLLAR-PHRC-150	150mm	150mm	160mm	200mm	62mm	1

SYSTEM RANGE RELATED SERVICES



Item number	Description	Min Order Qty	Pallet Qty
FyreFLEX 300W FyreFLEX 300G	FyreFLEX® Sealant Cartridge 300ml White or Grey	1	1920
FyreFLEX 600W FyreFLEX 600G	FyreFLEX® Sealant Sausage 600ml White or Grey	1	1040
FyreFLEX 10G	FyreFLEX® Sealant Pail 10L Grey	1	64



Item Number	Description	Min Order Qty	Pallet QTY
TWRAP 300*	300mm wide, 25mm thick blanket	7620mm long roll	24
TWRAP 450*	450mm wide, 25mm thick blanket	7620mm long roll	12
TWRAP 600*	600mm wide, 25mm thick blanket	7620mm long roll	12
Tape	Foil tape, 95mm wide, 50m roll	1	N/A
Cable Tie SS 12 x 521	4.6mm wide x 521mm long	25	N/A
Cable Tie SS 12 x 910	4.6mm wide x 910mm long	25	N/A

* FyreWrap® can be substituted for TWRAP™

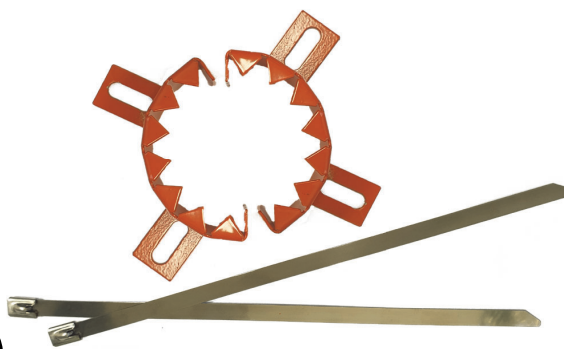
SYSTEM RANGE RELATED SERVICES

FyrePEX HP



Item number	Description	Min Order Qty	Pallet Qty
FyrePEX HP310	FyrePEX HP Intumescent	25	1600

FyreSHEATH



Ensures visible compliance | Reduces FyrePEX™ HP wastage



Item number	Size	Kit	Min Order Qty
FyrePEX Sheath 50mm Set	50mm	2 Sheaths (4 Halves) 2 x SS Cable Ties	1
FyrePEX Sheath 50mm Set	65mm	2 Sheaths (4 Halves) 2 x SS Cable Ties	1

FAQ?

Q Can I use thinner Maxilite boards for penetrations?

A The minimum Maxilite thickness for penetrations is 60mm, however you can make up this thickness with 2x30mm boards for example.

Q Can I paint over Maxilite?

A Yes, it is possible to paint over the board. Maxilite is porous so multiple coats are recommended.

Q Can I install a FyreSHIELD access panel into a 60mm Maxilite?

A We do not have a tested system containing a FyreSHIELD access panel in Maxilite.

Q I have a 2-hour rated wall, can I use a 60mm Maxilite to achieve a 4-hour rating?

A The FRL will be limited to the system and therefore would only achieve-/120/120 in this instance.

Q I require a large FyreBOX Maxi installed into an oversize opening. Can I install this into the Maxilite?

A When using Maxilite board, the largest approved FyreBOX is one 1100x125mm as long as the board is designed as per this manual to handle the weight of the FyreBOX Maxi. Refer to page 11.

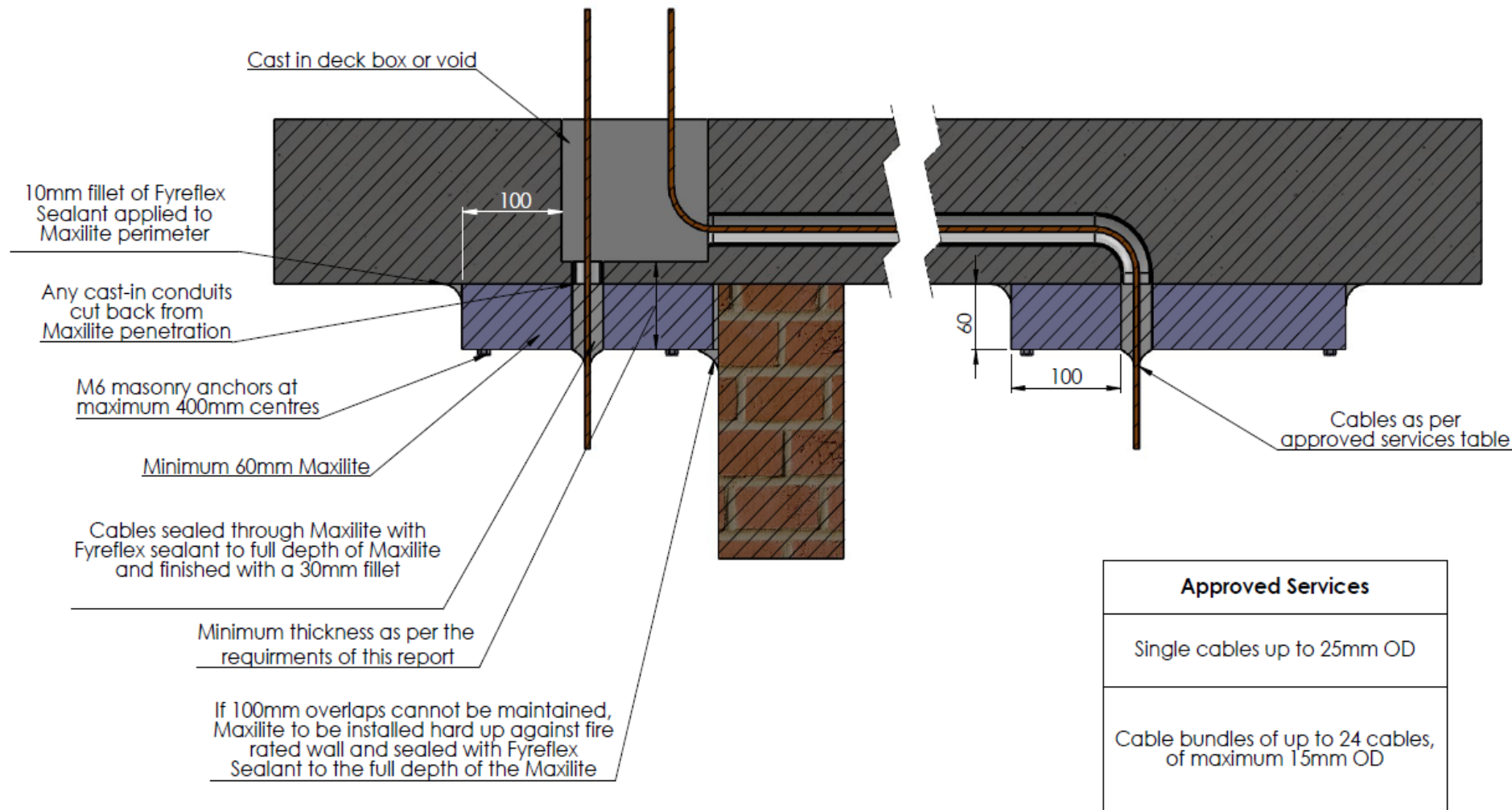
Q Can I build bulkheads or box-outs?

A Yes, refer to [FyreBOARD Maxilite Bulkheads and Ceilings Technical Manual](#).

SOCIAL MEDIA



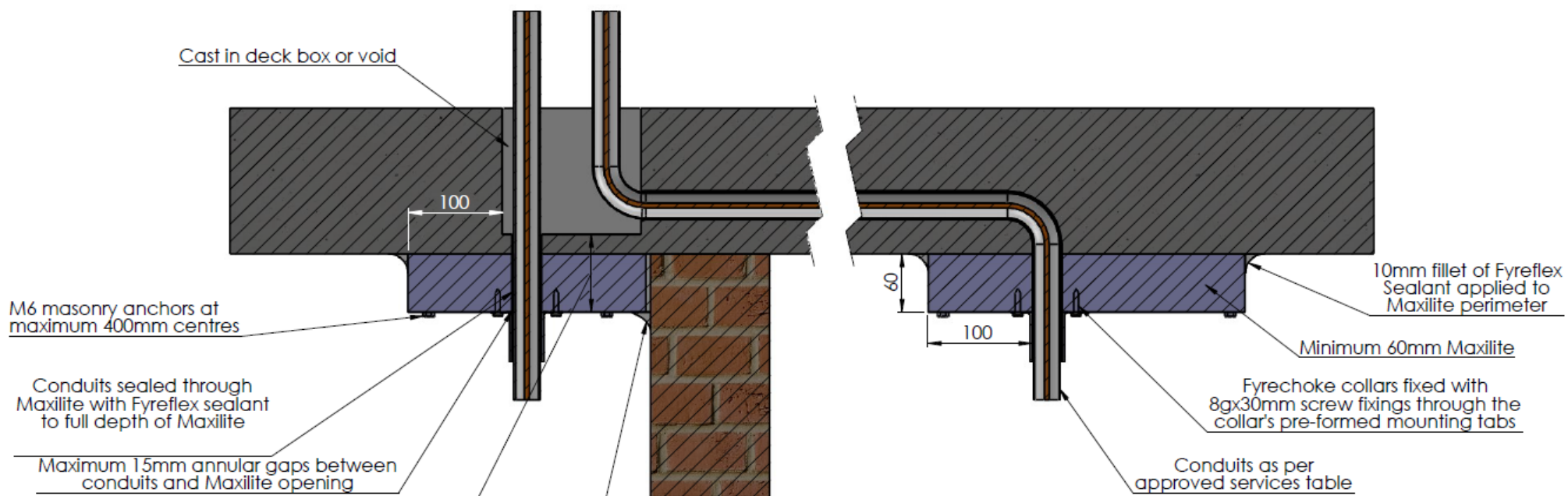

-/120/120



- Notes:
- Maximum annular gaps around cable services 20mm (ie. 20mm cable will require a max. 60mm opening)
 - Sealant installed to full depth of Maxilite
 - FRL of floor slab is maintained in regards to insulation performance only, structural adequacy to be confirmed by others

Approved Services
Single cables up to 25mm OD
Cable bundles of up to 24 cables, of maximum 15mm OD

-/120/120

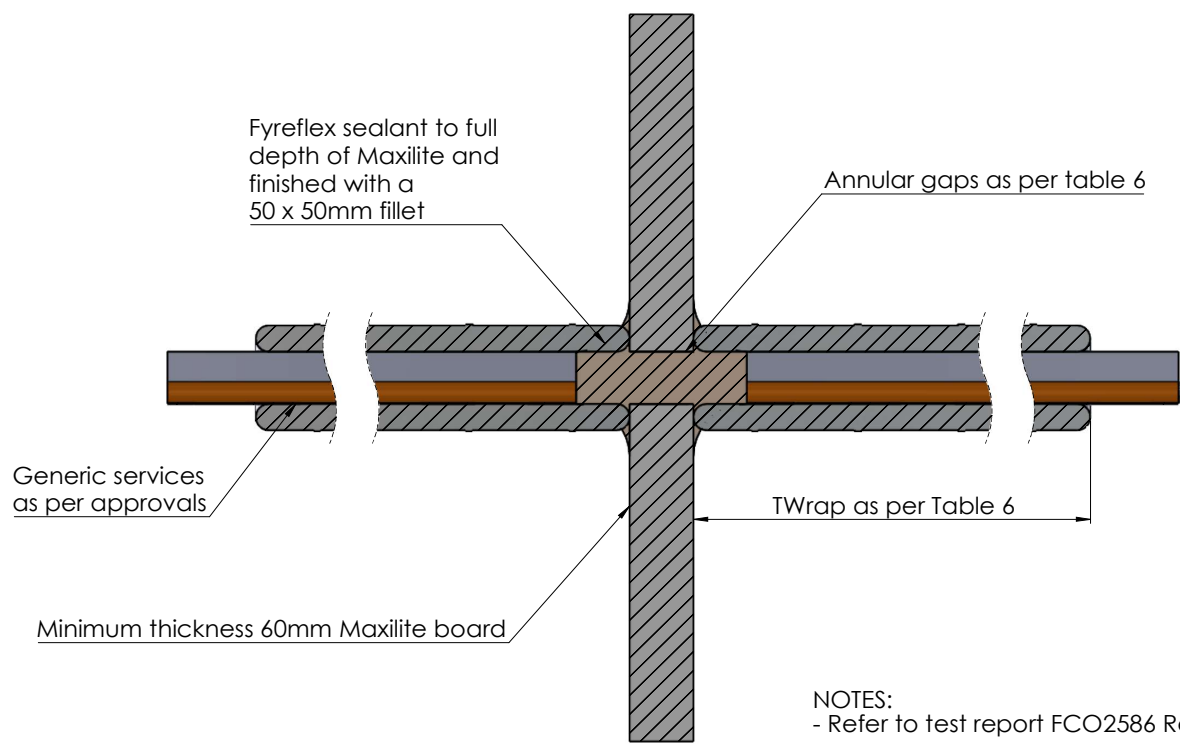



Minimum thickness as per the requirements of this report

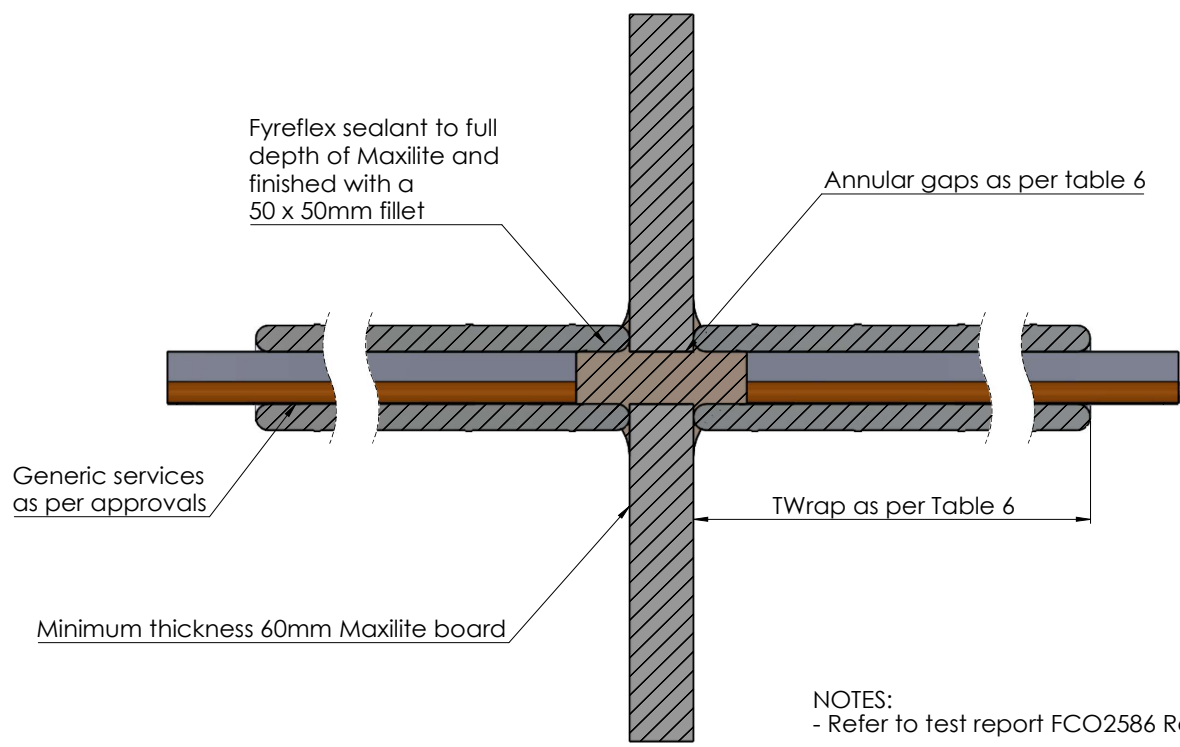
If 100mm overlaps cannot be maintained, Maxilite to be installed hard up against fire rated wall and sealed with Fyreflex Sealant to the full depth of the Maxilite


- Notes:
- Fyrechoke collars installed as per approvals
 - Conduits installed empty or with cables (including NBN fiber)
 - FRL of floor slab is maintained in regards to insulation performance only, structural adequacy to be confirmed by others

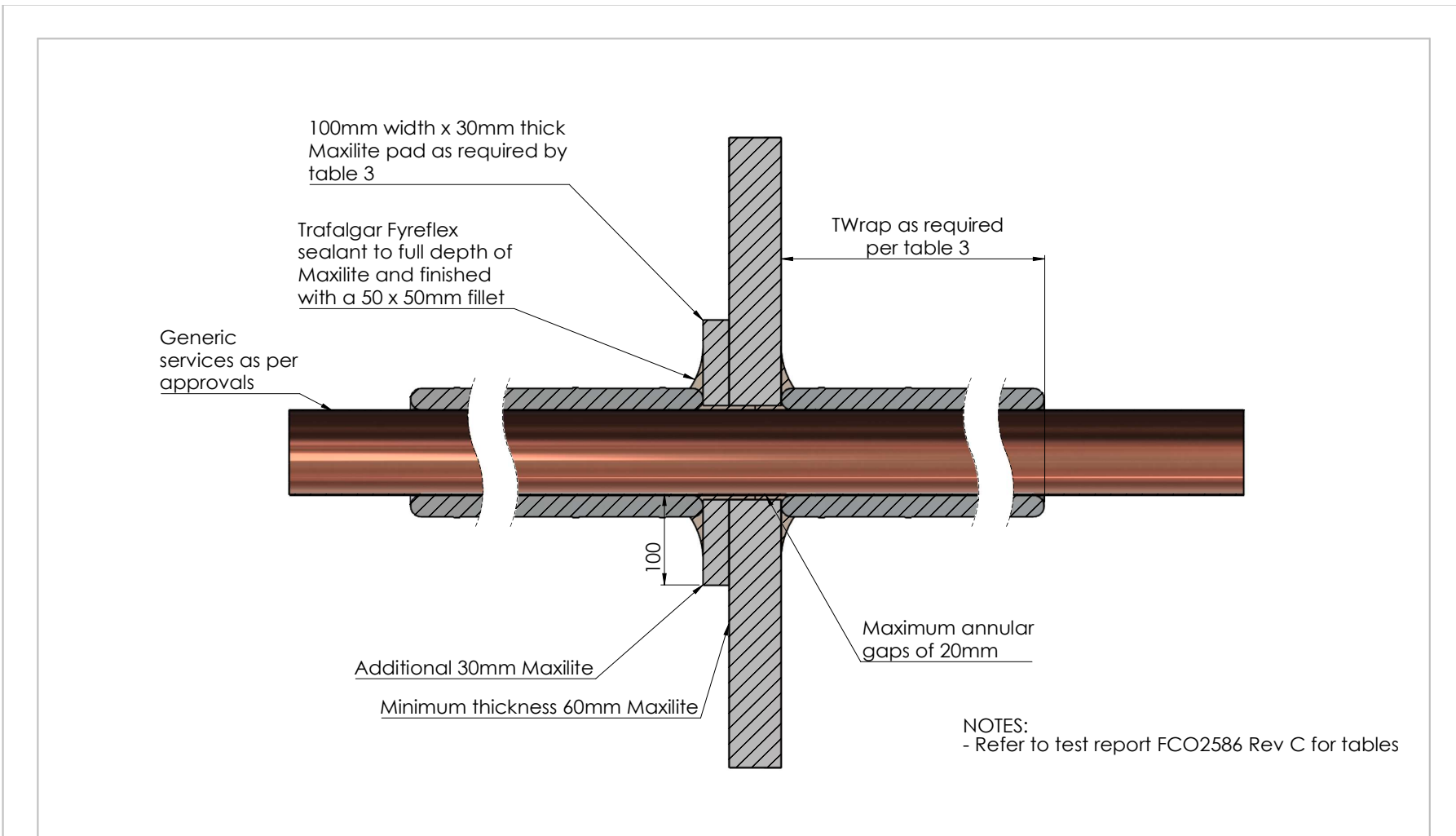
Approved Services
Conduits up to 25mm (25mm Fyrechoke Collar)
Conduits 25-32mm (32mm Fyrechoke Collar)
40mm Conduit (40mm Fyrechoke Collar)
50mm conduit (50mm Fyrechoke Collar)




Drawing Name: Maxilite service penetration				Test Standard: AS1530.4	Codes:	Revision:	Date:	No.:	NOTICE:
Project Title: Maxilite - Generic Install				Fire resistance level:	Drawn By: MP	<small>NOTE: ALL DIMENSIONS ARE IN MILLIMETRES (mm)</small>  Trafalgar Head Office: PO BOX 545 Chester Hill NSW 2162 T: 1800 888 714 F: 1800 201 500 E: info@tfire.com.au W: www.tfire.com.au			
Drawing No. : 1	Sheet: 1 of 9	Date: 17/01/2023	Scale:	Based on Report No.:	Checked By: JH				

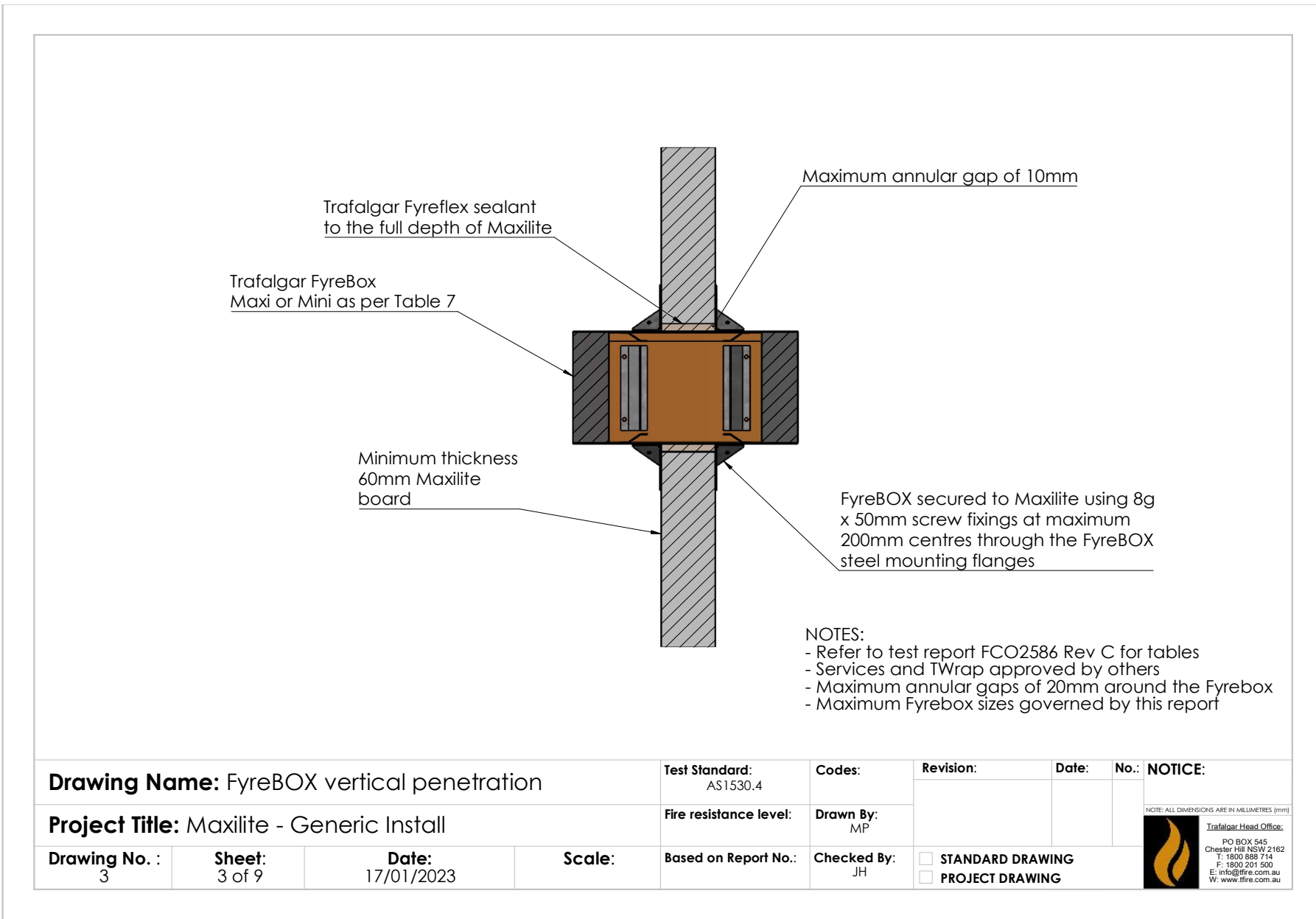


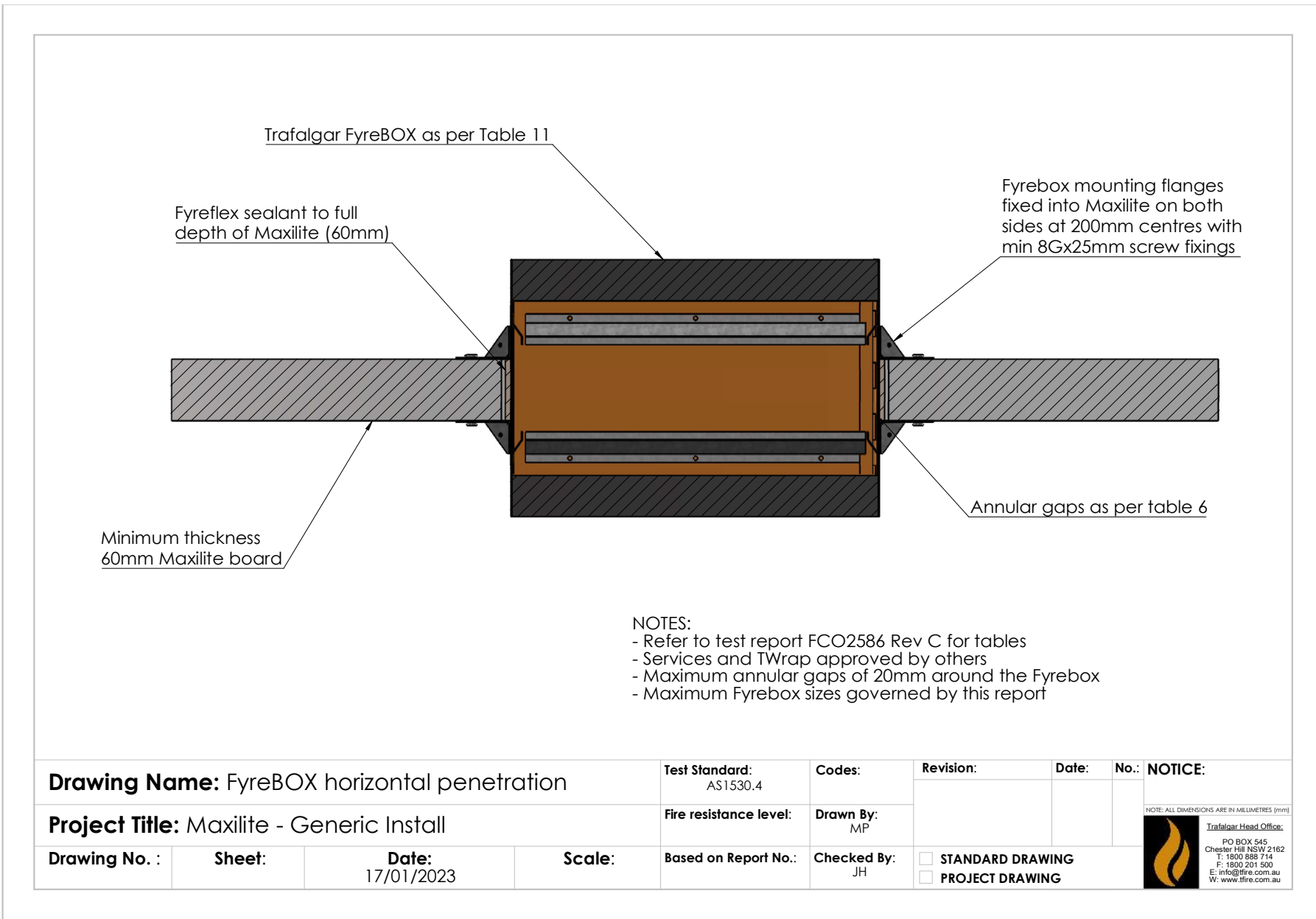
Drawing Name: Maxilite service penetration				Test Standard: AS1530.4	Codes:	Revision:	Date:	No.:	NOTICE:
Project Title: Maxilite - Generic Install				Fire resistance level:	Drawn By: MP	<small>NOTE: ALL DIMENSIONS ARE IN MILLIMETRES (mm)</small>  Trafalgar Head Office: PO BOX 545 Chester Hill NSW 2162 T: 1800 888 714 F: 1800 201 500 E: info@tfire.com.au W: www.tfire.com.au			
Drawing No. : 1	Sheet: 1 of 9	Date: 17/01/2023	Scale:	Based on Report No.:	Checked By: JH				



NOTES:
- Refer to test report FCO2586 Rev C for tables

Drawing Name: Maxilite additional patch				Test Standard: AS1530.4	Codes:	Revision:	Date:	No.:	NOTICE:
Project Title: Maxilite - Generic Install				Fire resistance level:	Drawn By: MP	<small>NOTE: ALL DIMENSIONS ARE IN MILLIMETRES (mm)</small>  Trafalgar Head Office: PO BOX 545 Chester Hill NSW 2162 T: 1800 888 714 F: 1800 201 500 E: info@tfire.com.au W: www.tfire.com.au			
Drawing No. : 2	Sheet: 2 of 9	Date: 17/01/2023	Scale:	Based on Report No.:	Checked By: JH				

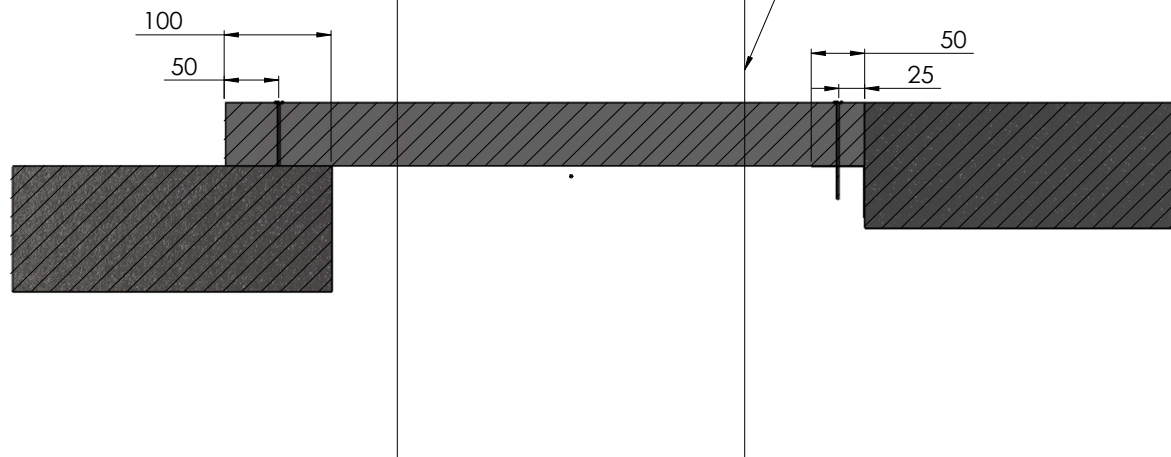





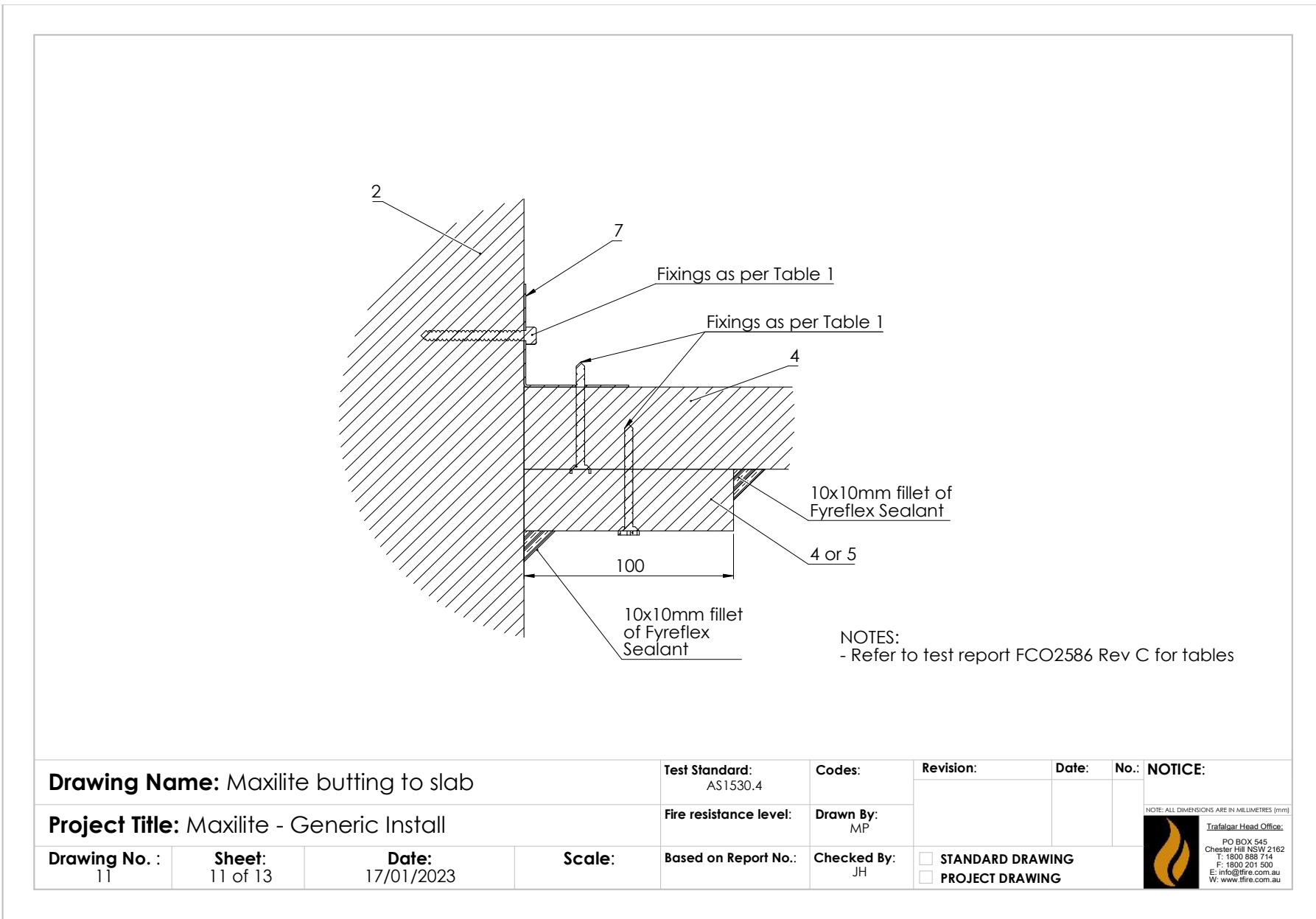
For 'face-fix' with overlap, penetrations can be 100mm in from the edge of the Maxilite (so as not to hit the concrete).


Penetration Zone

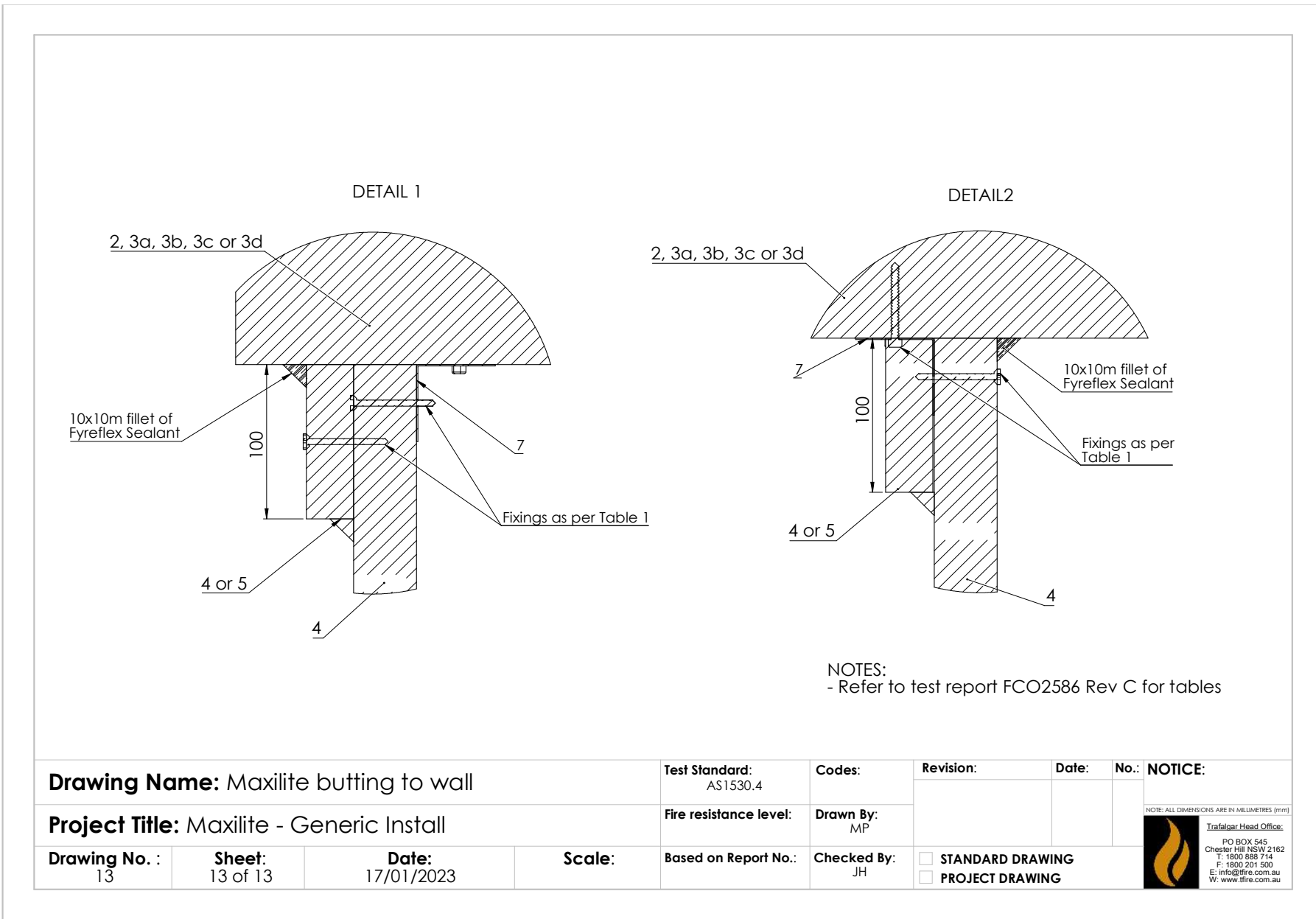
For 'flush-fit' installations with a steel angle, penetrations can be 50mm in from the edge of the Maxilite (so as not to hit the angle).




Drawing Name: Penetration zone				Test Standard: AS1530.4	Codes:	Revision:	Date:	No.:	NOTICE:
Project Title: Maxilite - Generic Install				Fire resistance level:	Drawn By: MP	<small>NOTE: ALL DIMENSIONS ARE IN MILLIMETRES (mm)</small>			
Drawing No. : 5	Sheet: 5 of 9	Date: 17/01/2023	Scale: NTS	Based on Report No.:	Checked By: JH	<input type="checkbox"/> STANDARD DRAWING	 TRAFALGAR Head Office: PO BOX 545 Chester Hill NSW 2162 T: 1800 888 714 F: 1800 201 500 E: technical@group.com.au W: www.fire.com.au		
						<input type="checkbox"/> PROJECT DRAWING			



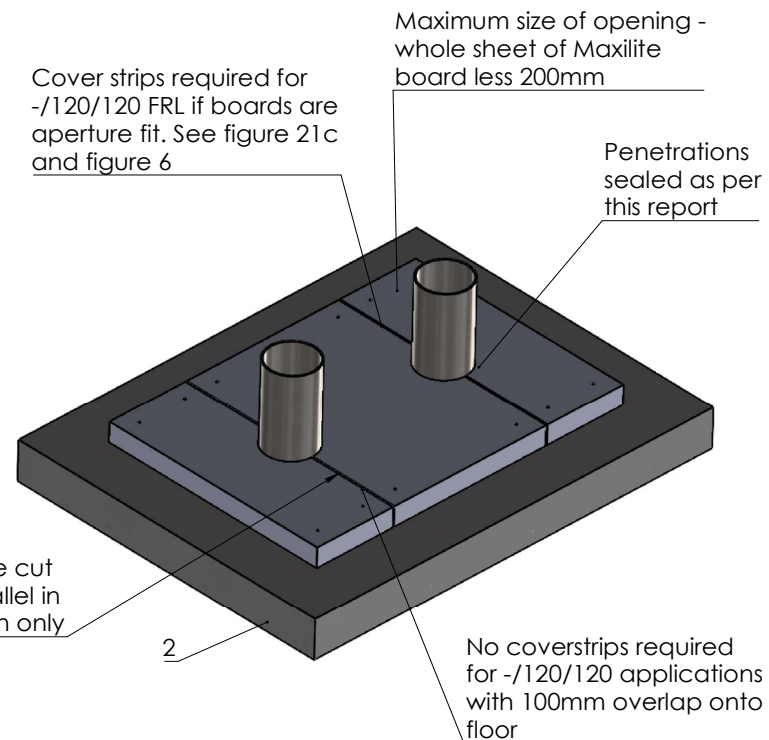
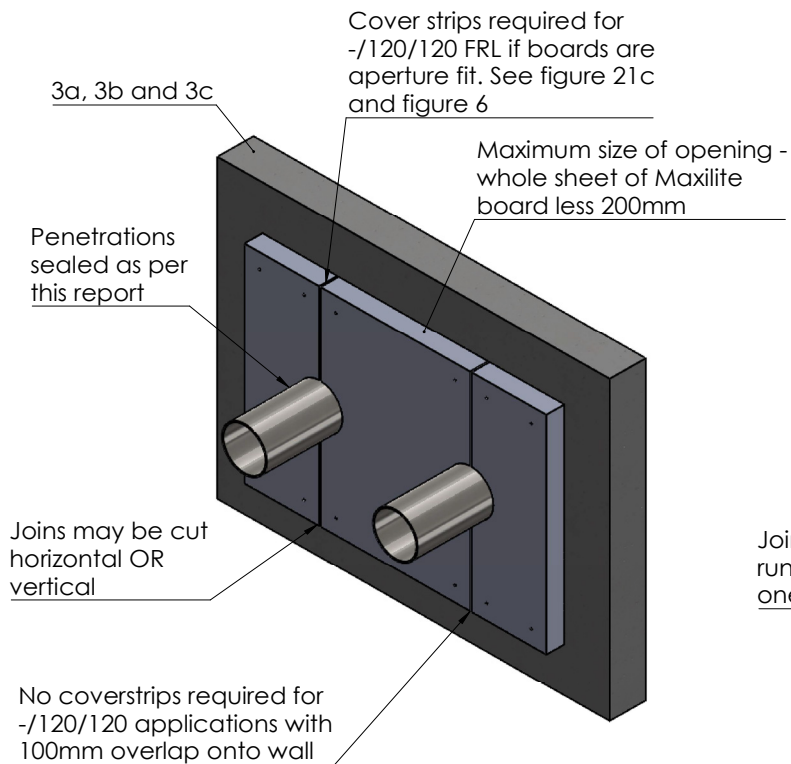
Drawing Name: Maxilite butting to slab				Test Standard: AS1530.4	Codes:	Revision:	Date:	No.:	NOTICE:
Project Title: Maxilite - Generic Install				Fire resistance level:	Drawn By: MP	<small>NOTE: ALL DIMENSIONS ARE IN MILLIMETRES (mm)</small>  Trafalgar Head Office: PO BOX 545 Chester Hill NSW 2162 T: 1800 888 714 F: 1800 201 500 E: info@tfire.com.au W: www.tfire.com.au			
Drawing No. : 11	Sheet: 11 of 13	Date: 17/01/2023	Scale:	Based on Report No.:	Checked By: JH				




NOTES:
- Refer to test report FCO2586 Rev C for tables

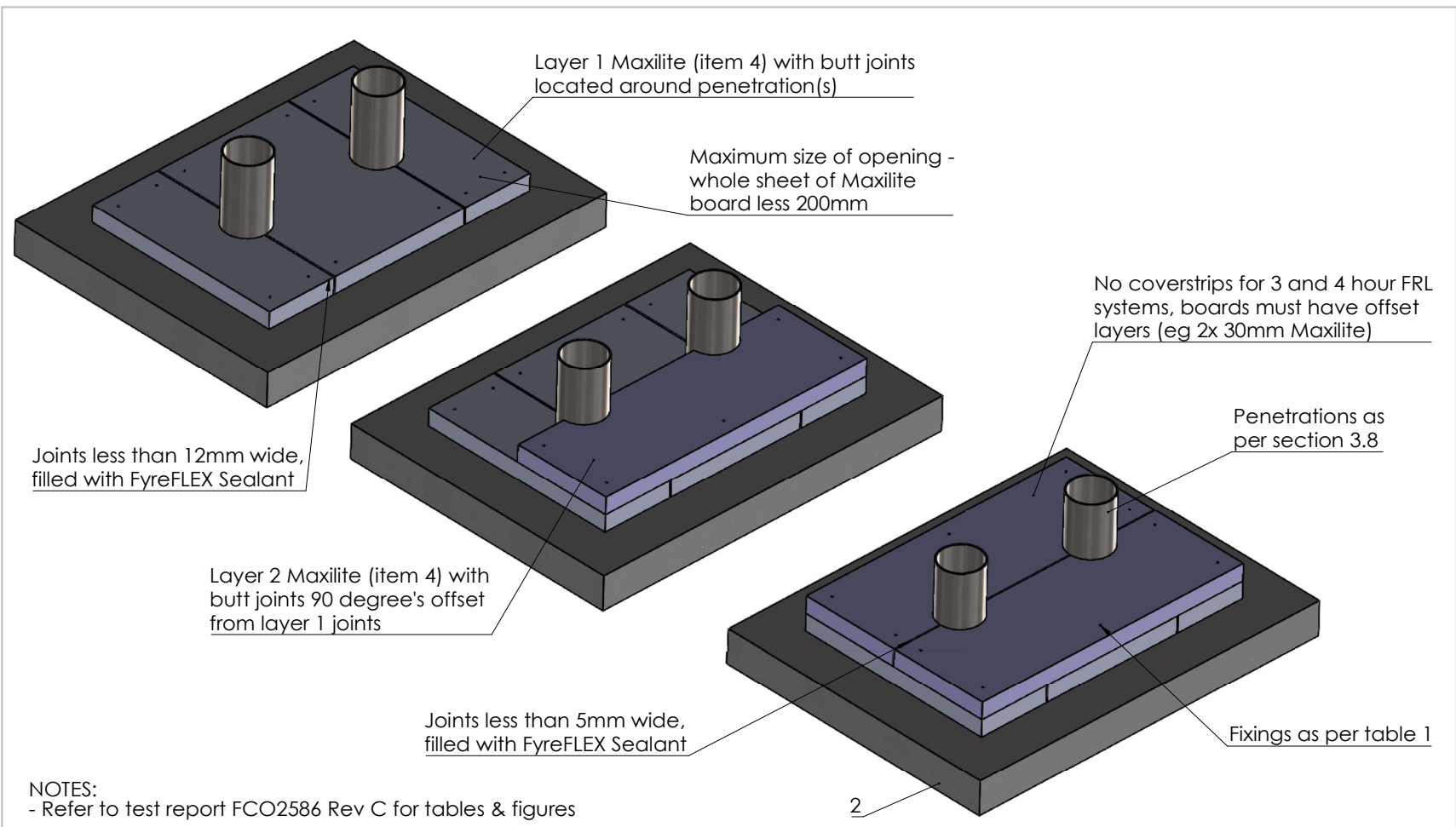
Drawing Name: Maxilite butting to wall				Test Standard: AS1530.4	Codes:	Revision:	Date:	No.:	NOTICE:
Project Title: Maxilite - Generic Install				Fire resistance level:	Drawn By: MP	<small>NOTE: ALL DIMENSIONS ARE IN MILLIMETRES (mm)</small>  Trafalgar Head Office: PO BOX 545 Chester Hill NSW 2162 T: 1800 888 714 F: 1800 201 500 E: info@tfire.com.au W: www.tfire.com.au			
Drawing No. : 13	Sheet: 13 of 13	Date: 17/01/2023	Scale:	Based on Report No.:	Checked By: JH				

Penetration systems in walls and floors




NOTES:
- Refer to test report FCO2586 Rev C for tables & figures

Drawing Name: Maxilite fixed to wall/floor				Test Standard:	Codes:	Revision:	Date:	No.:	NOTICE:
Project Title: Maxilite - Generic Install					Drawn By: MP				<small>NOTE: ALL DIMENSIONS ARE IN MILLIMETRES (mm)</small>
Drawing No. : 8	Sheet: 8 of 9	Date: 17/01/2023	Scale: NTS	Based on Report No.:	Checked By: MP	<input type="checkbox"/> STANDARD DRAWING	 TRAFALGAR FIRE <small>PO BOX 545 Chester Hill NSW 2162 T: 1800 888 714 F: 1800 201 500 E: technical@group.com.au W: www.fire.com.au</small>		
						<input type="checkbox"/> PROJECT DRAWING			



NOTES:
- Refer to test report FCO2586 Rev C for tables & figures

Drawing Name: Maxilite with butt joints				Test Standard:	Codes:	Revision:	Date:	No.:	NOTICE:
Project Title: Maxilite - Generic Install					Drawn By: MP				<small>NOTE: ALL DIMENSIONS ARE IN MILLIMETRES (mm)</small>
Drawing No. : 9	Sheet: 9 of 9	Date: 17/01/2023	Scale: NTS	Based on Report No.:	Checked By: JH	<input type="checkbox"/> STANDARD DRAWING	 TRAFALGAR FIRE <small>Trafalgar Head Office: PO BOX 545 Chester Hill NSW 2162 T: 1800 888 714 F: 1800 201 500 E: technical@group.com.au W: www.fire.com.au</small>		
						<input type="checkbox"/> PROJECT DRAWING			