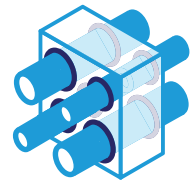


Promat

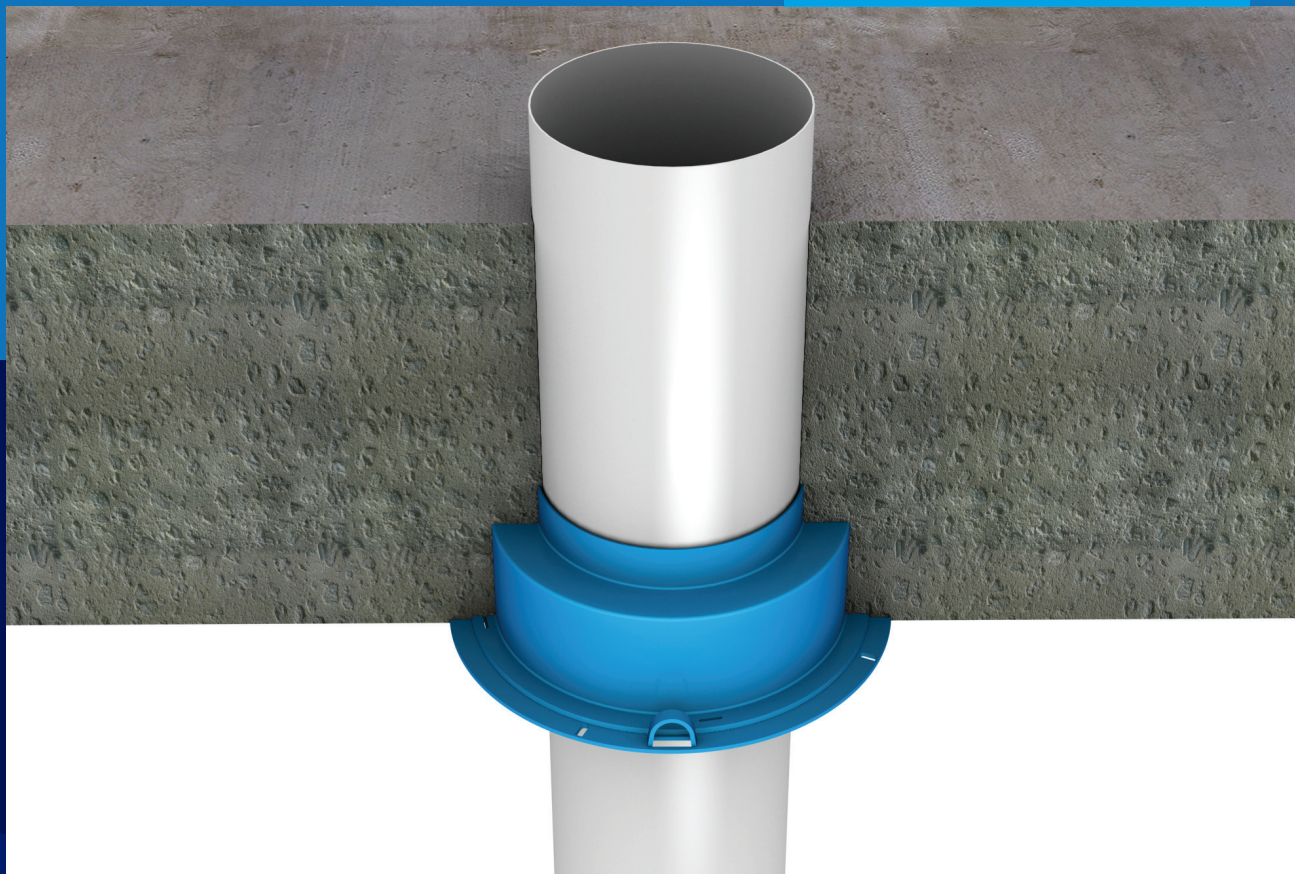


Penetration seal

PROMASEAL[®] CIL

Cast-in Collar

Installation Instructions



www.promat.com

etex inspiring ways
of living

PROMASEAL® CIL Cast-in Collars

are designed to be fixed to the formwork prior to pouring of concrete floor slabs. The collars accommodate the uPVC pipe fitting within the thickness of the slab enabling space saving.

PROMASEAL® CIL Cast-in Collars are approved for use in stack applications only, not to be used with floor wastes.

PROMASEAL® CIL Cast-in Collars will close both the pipe and pipe fitting in the event of fire for uPVC pipes. The collars have been tested for up to -/240/240 fire resistance in accordance with AS 1530: Part 4: 2014 and AS 4072: Part 1: 2005 with various plastic pipes including uPVC, HDPE, PPR, Raupiano and other PP Acoustic pipes.

For slabs that use lost formwork or are less than 120mm thick, please consult Promat.

Installation method

Cast-in installation to concrete/masonry floors

Place the collar onto the formwork. Secure the collar into position with 20mm x 3mm flat head clouts, nailed through the slots provided. Do not skew nail.

Insert a pipe section through the collar so that the end of the pipe sits flat on the formwork, ensuring the top of the pipe is higher than the finished slab depth. Ensure the pipe section remains in place and vertical during the concrete pour and immediately afterwards.

After the formwork is stripped, the short section of pipe used during casting may be knocked out of the collar and replaced with the complete pipe section. At this time ensure that the metal base plate ring is free from any concrete or other debris.

PROMASEAL® CIL Cast-in Collars have been extensively tested on permanent formwork decks such as "KingFlor", these are profiled steel decks with an uneven soffit requiring specialist application methods. Please consult Promat for details.

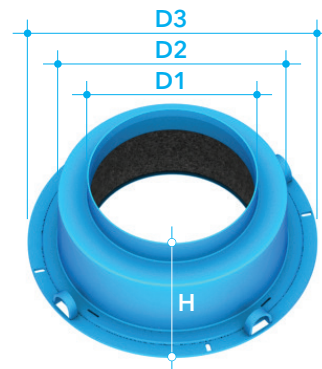
Typical specification

Where plastic pipes used for stack systems are to be fire rated, use PROMASEAL® CIL Cast-in Collars as tested to AS 1530: Part 4: 2014 and AS 4072: Part 1: 2005 to maintain the fire resistance of the element. All details in accordance with the manufacturers instructions. All work to be certified in an approved manner.

Approvals

Pipe materials and sizes in appropriate thickness for floor slabs. All results are based on 175mm thick slab. For thinner slabs or other sizes and types of pipe, please consult Promat.

Code no.	Pipe material	Pipe size	FRL
CIL 40	uPVC	40mm	-/240/240
CIL 50	uPVC	50mm	-/240/240
CIL 65	uPVC	65mm	-/240/240
CIL 80	uPVC	80mm	-/240/240
CIL 100	uPVC	100mm	-/240/240
CIL 40	HDPE	40mm	-/240/240
CIL 50	HDPE	50mm	-/240/240
CIL 65	HDPE	56mm	-/240/240
CIL 65	HDPE	63mm	-/240/240
CIL 80	HDPE	70mm	-/240/240
CIL 100	HDPE	90mm	-/240/240
CIL 100	HDPE	110mm	-/240/240



Dimensions

Code no.	Body			Flange
	H	D1	D2	D3
CIL 40	49mm + 30mm*	43mm	115mm	160mm
CIL 50	49mm + 30mm*	56mm	115mm	160mm
CIL 65	49mm + 20mm*	69mm	115mm	160mm
CIL 80	60mm + 20mm*	83mm	163mm	210mm
CIL 100	60mm + 20mm*	110mm	163mm	210mm

*Additional height of upright pipe grip

Promat provides a wide range of systems for compartmentation, fire resistant air and cable ducts, structural steel protection, fire stopping and partitions. For assistance with any passive fire protection problems, please consult Promat.

Promat Australia Pty Ltd

South Australia office

1800 Promat (776 628)
+61 8 8352 1014
PAPL.mail@etexgroup.com

New South Wales office

1800 Promat (776 628)
+61 2 9630 0258
PAPL.mail@etexgroup.com

Victoria office

1800 Promat (776 628)
1800 334 598
PAPL.mail@etexgroup.com

Queensland office

1800 011 376
1800 334 598
PAPL.mail@etexgroup.com